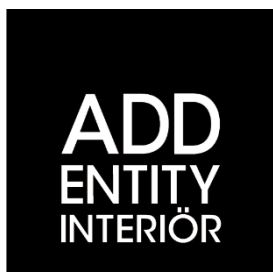


Statligt Ramavtal - Möbler och inredning

Delområde – Inredningsarmaturer (H)



Muuto – Produktlista nr 2



Addentity Interiör AB
Östra Rönneholmsvägen 5
211 47 Malmö

Telefon: 0733-335020
avropa@addentityinterior.se

Org.nummer: 556839-3416
Avtalsnummer: 23.3-8004-18:008

18% rabatt ska dras av på angivna priser

LIGHTING

18% rabatt ska dras av på angivna priser

MUUTO

AMBIT LAMP SERIES

"What defines our attraction to shapes? With the Ambit Lamp Series, we wanted to explore form and proportions in a thorough and meticulous way. We discovered a unique dynamic between linear and rounded shapes that gives the lamp its unique outline, making the Ambit Lamp Series a timeless design that you'll never grow tired of while its handspun aluminum material and contrasting white inner makes for an elegant touch."

— TAF Studio



Designed by	TAF Studio / 2015, 2017, 2019 & 2021
Environment	Indoor
Country of Production	China
Cord Length	Pendant Lamp and Rail Lamp: 400 cm / 157.5" Wall Lamp: 250 cm / 98.4"
Bulb Included	Pendant Lamp Ø16,5 and Wall Lamp: Yes Pendant Lamp Ø55, Ø40, Ø25 and Rail Lamp: No
Ceiling Cap Included	Pendant Lamp and Rail Lamp: Yes Wall Lamp: No
Dimmable Function	Rail lamp: Yes (can be dimmed with industry standard phasecut dimmers, if dimmable bulb is used) Ambit Ø16,5: Yes (can be dimmed with industry standard phasecut dimmers) Ambit Ø25, Ø40 and Ø55: Yes (can be dimmed with industry standard phasecut dimmers, if dimmable bulb is used)
Socket Size	Ambit Ø25 and Rail Lamp: E14 Ambit Ø40 and Ø55: E27 Ambit Ø16,5 and Wall Lamp: GX53
Description	Embodying the values of Scandinavian design, the Ambit Lamp Series is as timeless as it is contemporary. Made of hand-spun aluminum that has been hand-painted, the Ambit Lamp Series features clean lines and a white interior that heighten contrasts of its outside shade while enhancing the light emitted in any room of a home, office or commercial space. Use the design on its own or symmetric formations and vibrant clusters.
Material	Aluminum lamp shades. Made from old brazer traditions, the lamp shades are press spun by hand. Hereafter, the lamp shades are polished and painted by hand. PVC cord.

Cleaning & Care

Rail Lamp:

The rail for the Ambit Rail Lamp is cut from tubes that are adjusted to fit each other on a lathe machine. Rail made from cast and extruded aluminum.

Wall Lamp:

Arm fixture and wall mount piece for the Ambit Wall Lamp are made from aluminum. An extra wall bracket is included in the Ambit Wall Lamp that allows for the wiring to be integrated into the wall.

Clean the lamp with a soft dry cloth. Always switch off the electricity before cleaning.

TESTS & CERTIFICATIONS

EU:

IEC 60598-1 and IEC 60598-2-1

Low Voltage Directive (LVD) - 2014/35/EU

ECO Design Directive - 245/2009/EC

ROHS Directive - 2011/65/EU amended RoHS 3 Directive 2015/863

REACH Directive - EC/1907/2006

WEEE Directive - 2012/19/EU

UK:

BS EN 60598-1 and BS 4533-102.1, EN 60598-2-1

Electrical Equipment (Safety) Regulations 2016

Electromagnetic Compatibility Regulations 2016

The Restriction of the Use of Certain Hazardous Substances in Electrical and Electronic Equipment Regulations 2012

The Ecodesign for Energy-Related Products and Energy Information (Amendment) (EU Exit) Regulations 2019

USA/Canada:

UL STD. 1598 / CSA STD. C22.2 NO.250.0

Australia/New Zealand:

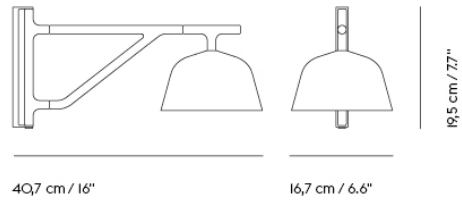
AS/NZS 60598.1 and AS/NZS 60598.2.1

*Does not apply to Ambit Pendant Ø16.5 and Ambit Wall Lamp

China:

*GB 7000.201 and GB 7000.1

*Please note that this certification does not apply for the Ambit Wall Lamp

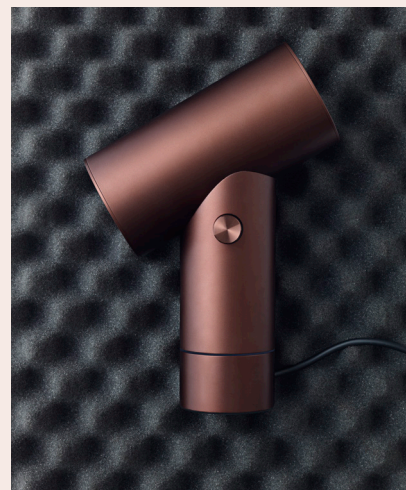


Shipper Colli 1
Gross Weight (kg) 1.734
Net Weight (kg) 1.04
Warranty Period 5 years

Item No.	Color	Contract Price	Lead Time
Ready-To-Ship			
15311	Black	SEK 3.138,10	-
15313	Grey	SEK 3.138,10	-
15314	Taupe	SEK 3.138,10	-
15312	White	SEK 3.138,10	-
Extras			
15804	Ambit / Fluid / Rime Ø12+Ø18+25 Cord - White (per linear meter)	SEK 59,30	-
15801	Ambit / Grain / Rime Ø12+Ø18+25 Cord - Black (per linear meter)	SEK 59,30	-
15803	Ambit Cord - Grey (per linear meter)	SEK 59,30	-
15806	Ambit Cord - Taupe (per linear meter)	SEK 59,30	-

BEAM TABLE LAMP

"The idea for the Beam Table Lamp came while renovating my childhood home. I had made a shelf to use as divider between the hallway and living room and needed a lamp that could at once throw light out into the living room and down the hallway. The Beam Table Lamp mimics a single ray of light that travels through a round tube with its dimmer allowing the user to change the volume of light omitted from both ends of the cylinder shape. Tweak the design to your personal needs through its rotating base and sleek body of anodized aluminum, whether it be as direct lighting or for an ambient glow. With the Beam Table Lamp, you can alter the volume of light omitted, change its direction by the turn of its base and place it on any shelf, table or windowsill for a new perspective on modern lighting."



— Tom Chung

Designed by	Tom Chung / 2018
Environment	Indoor
Country of Production	China
Cord Length	250 cm / 98.4"
Bulb Included	Yes
Dimmable Function	Yes
Description	The Beam Table Lamp is a versatile table lamp with a modern expression and intuitive user-friendliness. With light shone from both ends of a cylinder shape, the user can choose between three different volumes of light and gradually alter the volume of light emitted in each end through the turn of a playful dial. The Beam Table Lamp can be altered for any position with its rotating base and sleek body of anodized aluminum, whether it be as direct lighting or for an ambient glow in any home, offices, hotel room and educational areas.
Material	Body in anodized aluminum for a matte feel and vibrant look. Cord in PVC. It has a built-in energy efficient LED bulb. The lifetime of the LED bulb is defined as the time it takes until the light output/lumen maintenance reaches 90% (L90) of the initial output. The integrated bulb has a lifespan/lumen maintenance (L90) of 35,000 hours.
Cleaning & Care	Clean with soft dry cloth only. Always switch off electricity supply before cleaning.

TESTS & CERTIFICATIONS

EU:

IEC 60598-1 and IEC 60598-2-4

Low Voltage Directive (LVD) - 2014/35/EU

ECO Design Directive - 245/2009/EC

ROHS Directive - 2011/65/EU amended RoHS 3 Directive
2015/863

REACH Directive - EC/1907/2006

WEEE Directive - 2012/19/EU

UK:

BS EN 60598-1 and EN 60598-2-4

Electrical Equipment (Safety) Regulations 2016

Electromagnetic Compatibility Regulations 2016

The Restriction of the Use of Certain Hazardous Substances in

Electrical and Electronic Equipment Regulations 2012

The Ecodesign for Energy-Related Products and Energy

Information (Amendment) (EU Exit) Regulations 2019

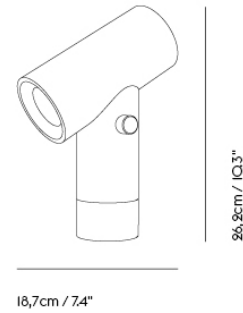
The Eurasian Economic Union:

TP TC 004 and TP TC 020

USA/Canada:

UL STD. 153 / CSA STD. C22.2 NO.250.4

BEAM TABLE LAMP



Shipper Colli 1
Gross Weight (kg) 1.72
Net Weight (kg) 1.234
Warranty Period 5 years

Item No.	Color	Contract Price	Lead Time
Ready-To-Ship			
12124	Aluminum	SEK 2.536,10	-
12121	Black	SEK 2.536,10	-
12123	Green	SEK 2.536,10	-
12122	Umber	SEK 2.536,10	-

CONTROL TABLE LAMP

"The Control Table Lamp is a unique and playful lamp with references to hi-fi and industrial machinery. The light and dimmer is controlled by a switch, referencing volume controls, and is an inviting and simple way of interacting with the user. While designing the lamp, we were inspired by the idea of displaying the different lamp components on a serving plate—almost as a still life. It was a pragmatic approach to making a lamp by the simplest means, a reduced design beyond reduction."

— TAF Studio



Designed by	TAF Studio / 2016
Environment	Indoor
Country of Production	China
Cord Length	250 cm / 98.5"
Bulb Included	Yes
Dimmable Function	Yes
Socket Size	E27
Description	The Control Table Lamp places the iconic E27 bulb in a modern context. With the user being able to alter the volume of light emitted according to their preferences through the playful turn of a dial, the Control Table Lamp combines industrial design with Scandinavian values.
Material	The lamp's base is casted in aluminum, polished and finally powder coated. Cord in PVC.
Cleaning & Care	Clean with soft dry cloth only. Always switch off the electricity supply before cleaning.

TESTS & CERTIFICATIONS

EU:

EN 60598-1 and EN 60598-2-4

Low Voltage Directive (LVD) - 2014/35/EU

ECO Design Directive - 245/2009/EC

ROHS Directive - 2011/65/EU amended RoHS 3 Directive 2015/863

REACH Directive - EC/1907/2006

WEEE Directive - 2012/19/EU

UK:

BS EN 60598-1 and EN 60598-2-4

Electrical Equipment (Safety) Regulations 2016

Electromagnetic Compatibility Regulations 2016

The Restriction of the Use of Certain Hazardous Substances in Electrical and Electronic Equipment Regulations 2012

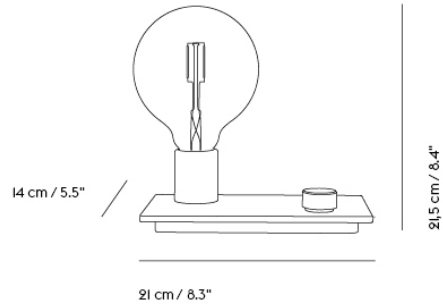
The Ecodesign for Energy-Related Products and Energy Information (Amendment) (EU Exit) Regulations 2019

USA/Canada:

UL STD. 153 / CSA STD. C22.2 NO.250.4

Australia/New Zealand:

AS/NZS 60598.1 and AS/NZS 60598.2.4



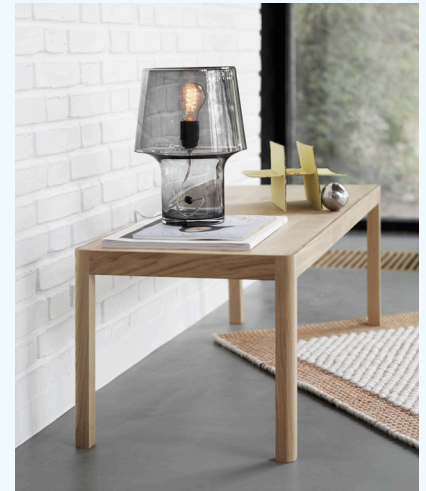
Shipper Colli 1
Gross Weight (kg) 1.4055
Net Weight (kg) 0.9125
Warranty Period 5 years

Item No.	Color	Contract Price	Lead Time
Ready-To-Ship			
15410	Black	SEK 1.504,10	-
15412	Grey	SEK 1.504,10	-
15413	Red	SEK 1.504,10	-
15411	White	SEK 1.504,10	-

COSY IN GREY TABLE LAMP

"The idea for the Cosy In Grey was to create a lamp that created a spatial atmosphere within the room. I put my trust in the natural material of glass; its beauty and changing reflections. The Cosy In Grey Table Lamp expresses the beauty of electrical light in a modern form. Whether it be early mornings, during lunch or a cold night, the Cosy In Grey Table Lamp will bring a warm and friendly atmosphere to any space."

— Harri Koskinen



Designed by	Harri Koskinen / 2006
Environment	Indoor
Country of Production	China
Cord Length	260 cm / 102.25"
Bulb Included	No. Only use dimmable bulb.
Dimmable Function	Yes
Socket Size	E27
Description	With its modern shape in mouth-blown glass, the Cosy In Grey Table Lamp provides gentle lighting through its dimmable naked bulb, encased in smoked grey glass. Place the Cosy In Grey Table Lamp in any space for a new perspective on ambient lighting.
Material	The Cosy in Grey Table Lamp is handmade, mouth blown in colored soda lime glass, cut grinded and polished by hand. PVC cord with a dimmer, plastic socket and an internal clear plastic construction to secure cord and socket. Bulb not included.
Cleaning & Care	Clean with soft dry cloth only. Always switch off the electricity supply before cleaning.

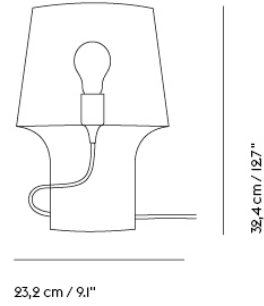
TESTS & CERTIFICATIONS

EU:

EN 60598-1 and EN 60598-2-4
 Low Voltage Directive (LVD) - 2014/35/EU
 ECO Design Directive - 245/2009/EC
 ROHS Directive - 2011/65/EU amended RoHS 3 Directive 2015/863
 REACH Directive - EC/1907/2006
 WEEE Directive - 2012/19/EU

UK:

BS EN 60598-1 and EN 60598-2-4
 Electrical Equipment (Safety) Regulations 2016
 Electromagnetic Compatibility Regulations 2016
 The Restriction of the Use of Certain Hazardous Substances in Electrical and Electronic Equipment Regulations 2012
 The Ecodesign for Energy-Related Products and Energy Information (Amendment) (EU Exit) Regulations 2019



Shipper Colli 1
Gross Weight (kg) 4.75
Net Weight (kg) 3.49
Warranty Period 5 years

Item No.	Color	Contract Price	Lead Time
Ready-To-Ship			
01033	Grey	SEK 2.317,70	-
Extras			
01040	LED Bulb	SEK 231,30	-

EASE PORTABLE LAMP

"I wanted the Ease Portable Lamp to have a remarkable quality of light, striking a versatile balance between atmospheric and functional light — after all, that is the wonderful thing about a portable lamp — you can bring a distinct ambience to literally anywhere. I landed on the idea of the top and bottom gently touching, softly meeting each other. There is a sense of lightness to it. This feature allows a large surface to emit light, while the flared bottom firmly stabilizes it. It is these details that give the lamp a sort of human quality, making it a reliable friend."

— Johan van Hengel



Design by	Johan van Hengel / 2023
Environment	Indoor / Outdoor
Country of Production	China
Cord Length	90 cm / 35.4"
Bulb Included	Yes - Integrated, non replaceable LED
Dimmable Function	Yes - Three step dimming
Description	Inspired by shapes of traditional table lamps, the Ease Portable Lamp transforms this typology into a carryable size, suitable to take wherever. Ease offers a high-quality dimmable, no-glare light with three levels, striking a balance between atmospheric and functional light. The design has a distinct lightness to it, with the top and bottom gently touching. A slightly flared bottom mimics the lip of a vase in a grounding gesture that allows the base to be slimmer and easier to grab. Ease Portable Lamp is a humble friend with a strong character that works alone or in repetition in any setting; from the bedside, reading nook and home office to the restaurant or café table, co-working space or library.
Material	Battery-powered, dimmable and portable lamp with 8 hours of battery life on 100% intensity, 16 hours on 50% intensity and 29 hours on 25% intensity. Body and lampshade made in injection-molded ABS plastic, with an integrated LED light source. Diffuser in opal acrylic. Charging dock made in injection-molded ABS plastic with USB-C cable. Lumen Maintenance (L70): 52.000h. Lumen: 230lm on 100% brightness. Kelvin: 2700K. CRI >90. The Ease Portable lamp is suitable for outdoor use with an IP54 rating. The lamp is protected and tested against solid foreign objects, such as dust ingress, as well as liquids, such as water splashes, from all angles.
Cleaning & Care	Clean with a moist cloth. If necessary, use a little dish soap on the cloth.

TESTS & CERTIFICATIONS

EU:

IEC 60598-1 and IEC 60598-2-1

Low Voltage Directive (LVD) - 2014/35/EU

ECO Design Directive - 245/2009/EC

ROHS Directive - 2011/65/EU amended RoHS 3 Directive 2015/863

REACH Directive - EC/1907/2006

WEEE Directive - 2012/19/EU

Electromagnetic Compatibility (EMC) Directive - 2014/30/EU

UK:

BS EN 60598-1 and BS 4533-102.1, EN 60598-2-1

Electrical Equipment (Safety) Regulations 2016

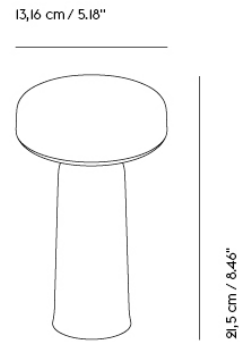
Electromagnetic Compatibility Regulations 2016

The Restriction of the Use of Certain Hazardous Substances in Electrical and Electronic Equipment Regulations 2012

The Ecodesign for Energy-Related Products and Energy Information (Amendment) (EU Exit) Regulations 2019

Australia/New Zealand:

AS/NZS 60598.1 and AS/NZS 60598.2.4



Shipper Colli 1
Gross Weight (kg) 0.947
Net Weight (kg) 0.63
Warranty Period 5 years

Item No.	Color	Contract Price	Lead Time
Ready-To-Ship			
22740	Black	SEK 1.762,10	-
22741	Grey	SEK 1.762,10	-
22743	Light Blue	SEK 1.762,10	-
22742	Taupe	SEK 1.762,10	-

FOCUS TABLE LAMP

"The Focus Table Lamp is an everyday object with a sculptural appeal and an apparent function: it is a lamp and a pedestal where your favorite small objects may be placed and highlighted. Working with the appearance and the delicate dimensions, I tried to give the lamp a unique personality characterized by an embracing and protective nature. The focus is on the pedestal and the object which is placed on it. Therefore, all components are fixed in position. Personally, the pedestal, with a cone of ambient light, solved my problem of misplacing my keys. Now I always know where they are."

— Andreas Bergsaker



Designed by	Andreas Bergsaker / 2017
Environment	Indoor
Country of Production	China
Bulb Included	Yes
Dimmable Function	No
Socket Size	GU10
Description	Scandinavian in its expression, the Focus Table Lamp highlights its ash wood body with black paint that allows for the texture of the wood to shine through. With a protruding base that is perfect for small items, the lamp fits seamlessly on a windowsill or shelf in need a bit of light.
Material	Focus Lamp's wooden components are shaped on a lathe machine. The electrical parts are hidden inside the lamps components, which are glued together to hide that they were ever apart. Thereafter, the lamp is painted. Ash wood and PVC cord.
Cleaning & Care	Clean with soft dry cloth only. Always switch off the electricity supply before cleaning.

TESTS & CERTIFICATIONS

EU:

EN 60598-1 and EN 60598-2-4

Low Voltage Directive (LVD) - 2014/35/EU

ECO Design Directive - 245/2009/EC

ROHS Directive - 2011/65/EU amended RoHS 3 Directive 2015/863

REACH Directive - EC/1907/2006

WEEE Directive - 2012/19/EU

UK:

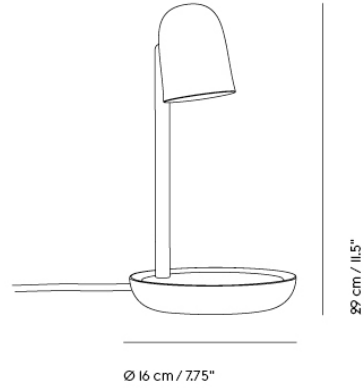
BS EN 60598-1 and EN 60598-2-4

Electrical Equipment (Safety) Regulations 2016

Electromagnetic Compatibility Regulations 2016

The Restriction of the Use of Certain Hazardous Substances in Electrical and Electronic Equipment Regulations 2012

The Ecodesign for Energy-Related Products and Energy Information (Amendment) (EU Exit) Regulations 2019



Shipper Colli 1
Gross Weight (kg) 1.05
Net Weight (kg) 0.695
Warranty Period 5 years

Item No.	Color	Contract Price	Lead Time
Ready-To-Ship			
21952	Black	SEK 1.332,10	-

LEAF LAMP SERIES

"Combining a light and elegant design with an energy-efficient LED technology, the Leaf Lamp Series has a clean and refined expression. The asymmetric geometry of the design gives it an organic and friendly appearance, inspired by the leaves on a tree. Turn the Leaf Lamp according to your needs and discover how the lamp will subtly transform its shape, adding a graphic and gentle light silhouette to any space."

— Broberg & Ridderstråle



Designed by	Broberg & Ridderstråle / 2012
Environment	Indoor
Country of Production	China
Cord Length	180 cm / 71"
Bulb Included	Yes
Dimmable Function	Yes
Description	With its elegantly simple lines, the Leaf Lamp Series brings ambient as well as direct lighting to any space, paired with its organic shape that is inspired by the leaves of a tree. The design features a dimmable LED light alongside a turnable head, allowing for its user to position the light as desired for one's individual space and atmosphere.
Material	Aluminum, brass, colored PVC cord. Leaf is a result of a process combining turned and casted aluminum and steel, with a strong powder coating as paint. It has a build-in energy-efficient LED bulb with a Lumen Maintenance (Lifetime) of L90 BIO 35.000 hours.
Cleaning & Care	Wipe off dust with dry cloth. If necessary use moist cloth, then dry off. Do not use abrasive cleaning agents. Always switch off the electricity supply before cleaning.

TESTS & CERTIFICATIONS

EU:

IEC 60598-1 and IEC 60598-2-4

Low Voltage Directive (LVD) - 2014/35/EU

ECO Design Directive - 245/2009/EC

ROHS Directive - 2011/65/EU amended RoHS 3 Directive 2015/863

REACH Directive - EC/1907/2006

WEEE Directive - 2012/19/EU

UK:

BS EN 60598-1 and EN 60598-2-4

Electrical Equipment (Safety) Regulations 2016

Electromagnetic Compatibility Regulations 2016

The Restriction of the Use of Certain Hazardous Substances in Electrical and Electronic Equipment Regulations 2012

The Ecodesign for Energy-Related Products and Energy Information (Amendment) (EU Exit) Regulations 2019

USA/Canada:

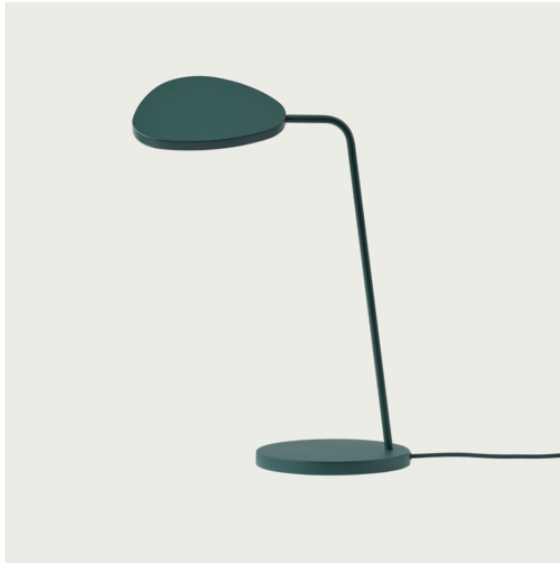
UL STD. 153 / CSA STD. C22.2 NO.250.4

Australia/New Zealand:

AS/NZS 60598.1 and AS/NZS 60598.2.4

LEAF TABLE LAMP

30



15,5 x 18,5 cm / 6" x 7.25"



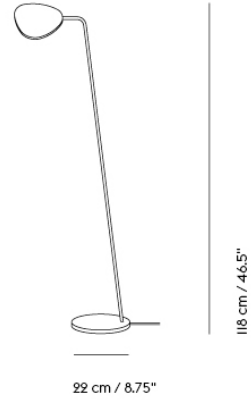
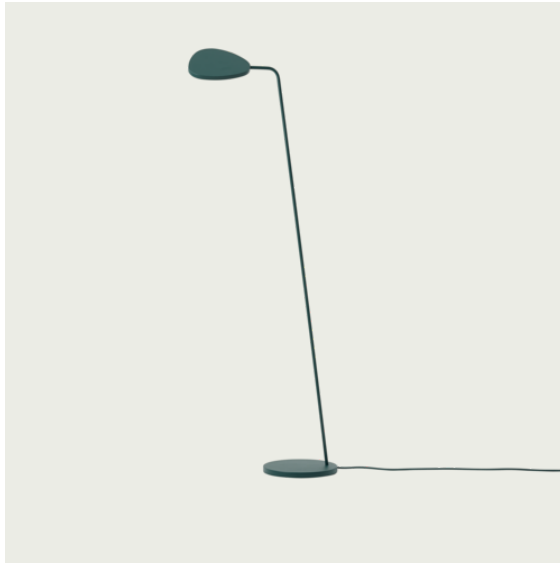
41,5 cm / 16.25"

18 cm / 7"

Shipper Colli	1
Gross Weight (kg)	2.44
Net Weight (kg)	1.8
Warranty Period	5 years

Item No.	Color	Contract Price	Lead Time
Ready-To-Ship			
13422	Black	SEK 2.536,10	-
13423	Copper Brown	SEK 2.536,10	-
13424	Dark Green	SEK 2.536,10	-
13420	Grey	SEK 2.536,10	-
13421	White	SEK 2.536,10	-

LEAF FLOOR LAMP



Shipper Colli 1
Gross Weight (kg) 4.793
Net Weight (kg) 2.8
Warranty Period 5 years

Item No.	Color	Contract Price	Lead Time
Ready-To-Ship			
13432	Black	SEK 3.482,10	-
13433	Copper Brown	SEK 3.482,10	-
13434	Dark Green	SEK 3.482,10	-
13430	Grey	SEK 3.482,10	-
13431	White	SEK 3.482,10	-

LINEAR LAMP SERIES

“The Linear Lamp Series is designed from the idea of creating smaller atmospheres through modern light, bringing a sense of intimacy to larger spaces. With their elegant expression, subtle details and inherent functionality, the designs create space for both being and working on your own as well as making for a friendly environment when in the company of others. Use the Linear Lamp Series in any space in need of modern, functional lighting.”

— Thomas Bentzen



Designed by	Thomas Bentzen / 2020
Environment	Indoor
Country of Production	China
Cord Length	Table Lamp: 250 cm / 98.4". Mounted Lamp: 150 cm / 59.1". Pendant Lamp: 400 cm / 157.5"
Bulb Included	Yes - integrated LED
Dimmable Function	Yes: Table Lamp and Mounted Lamp / No: Pendant Lamp
Description	Designed from the idea of creating smaller spaces within larger settings, the Linear Lamp Series by Thomas Bentzen is created with subtlety at its heart—simple lines, inviting functionalities and dimmable light that can be adjusted to any setting. The Linear Table & Mounted Lamps hint toward the archetypal library lamp with a modern expression, paired with the extensive functionality of dimmability. Available in two sizes, the Linear Mounted Lamp brings a friendly canopy of light to any space.
Material	Linear Pendant Lamp: Powder coated lamp head in pressure die-casted and extruded aluminum. Linear Table Lamp & Linear Mounted Lamp: Powder coated lamp head in extruded aluminum. Diffuser in polycarbonate. PVC cord.
Cleaning & Care	Clean with a moist cloth. If necessary, use a little dish soap on the cloth.



Shipper Colli 1
Gross Weight (kg) 1.832
Net Weight (kg) 1.3
Warranty Period 5 years

Item No.	Color	Contract Price	Lead Time
Ready-To-Ship			
22510	Black	SEK 3.826,10	-
22511	Grey	SEK 3.826,10	-

PITON PORTABLE LAMP

"My idea for Piton started from the desire to create a rechargeable portable lamp that could be adapted in a multitude of ways while functioning in various environments. I wanted the design to fulfill the inherent needs of a torch; providing security and warmth while clearly illuminating your field of vision. Piton takes its name from a climbing apparatus that is jammed into cracks and crevices on mountainsides to which the climber can attach hooks, tools and ropes while rigging it in various positions; an element that is also present in the design of the Piton Portable Lamp."

— Tom Chung



Designed by	Tom Chung / 2022
Environment	Indoor / Outdoor
Country of Production	China
Cord Length	300 cm textile USB cable (no power adapter included)
Bulb Included	Yes - integrated LED
Dimmable Function	Yes - Continuous
Description	Piton is an untraditional take on the battery-powered portable lamp, playfully referencing the archetypal flashlight. Refined anodized extruded aluminum enhances its elegant form and distinct functionality inspired by tools used for mountain climbing. It is a versatile ambient light with 6 hours of battery life on 100% brightness and 13,5 hours on 50% brightness that can be used lying, standing, tilting on a shelf or suspended, depending on the space or spot you want to illuminate, effortlessly moving between indoors and outdoors.
Material	Battery-powered portable lamp with 6 hours of battery life on 100% brightness and 13,5 hours on 50% brightness. Continuous dim function. Body made from anodized extruded aluminum. Lamp shade made in injection molded plastic with an integrated and replaceable LED light bulb. Comes with a woven fabric USB-C cable for charging. The Piton Portable Lamp is suitable for outdoor use with an IP54 rating. The lamp is protected and tested against solid foreign objects, such as dust ingress, as well as liquids, such as water splashes, from all angles.
Cleaning & Care	Clean with a moist cloth. If necessary, use a little dish soap on the cloth. Always switch off the electricity supply before cleaning.

TESTS & CERTIFICATIONS

EU:

ECO Design Directive - 245/2009/EC

ROHS Directive - 2011/65/EU amended RoHS 3 Directive 2015/863

REACH Directive - EC/1907/2006

WEEE Directive - 2012/19/EU

Electromagnetic compatibility - EN IEC 55015 / EN IEC 61000 / EN 61547

UK:

The Restriction of the Use of Certain Hazardous Substances in Electrical and Electronic Equipment Regulations 2012

The Ecodesign for Energy-Related Products and Energy Information (Amendment) (EU Exit) Regulations 2019

Electromagnetic compatibility - BS EN 6100 / BS EN IEC 55015 / BS EN 61547

Australia/New Zealand:

AS/NZS 60598.1 / 60598.2.4

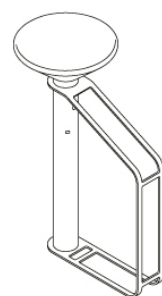
AS/NZS 61347.1 / 61347.2.13

IEC 62031

IEC TR62778



13,2 cm / 5.2"



32,1 cm / 12.6"

21,8 cm / 8.6"

Shipper Colli 1
 Net Weight (kg) 0.539
 Warranty period 5 years

Item No.	Color	Contract Price	Lead Time
Ready-To-Ship			
22581	Aluminum	SEK 1.973,70	-
22580	Black	SEK 1.973,70	-

POST LAMP SERIES

"The Post Lamp Series came from the idea of exploring the flexibility of the magnetic joint, giving the user the freedom to position and dim the lamp's light units according to individual needs. Designed with a sculptural expression, simple lines and a refined finish, the Post Lamp Series represents a new perspective through its graphic character and forward-thinking functionality."

— Earnest Studio



Designed by	Earnest Studio / 2020
Environment	Indoor
Country of Production	China
Cord Length	Lighting units: 250 cm / 98.4" / Power Hub: 200 cm / 78.7"
Bulb Included	Yes
Dimmable Function	Yes

The Post Lamp Series is an innovative lighting design with an archetypal appearance, graphic character and forward-thinking functionalities. Exploring the utmost flexibility of a magnetic joint, the user can position, dim and turn the lamp according to individual needs. Arrange the cord of the design in linear or playful formations on the wall, using its cable drop. Additional lighting units can be purchased as spare part and plugged into power hub.

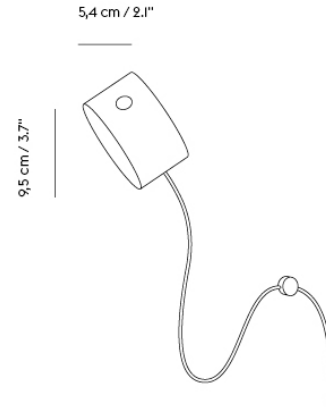
Description	Lighting unit in powder coated magnesium with silicone cord and acrylic opal diffuser. Power hub in powder coated plastic with PVC cord.
Material	Post Wall Lamp: Wall mounting bracket in powder coated steel. Wall cable drops in powder coated steel with magnet and repositionable adhesive tape. Post Floor Lamp: Base in powder coated steel. Cable drops in powder coated plastic with magnet.
Cleaning & Care	Clean with soft dry cloth only. Always switch off the electricity supply before cleaning.

TESTS & CERTIFICATIONS

EU:
IEC 60598-1 and IEC 60598-2-4
Low Voltage Directive (LVD) - 2014/35/EU
ECO Design Directive - 245/2009/EC
ROHS Directive - 2011/65/EU amended RoHS 3 Directive 2015/863
REACH Directive - EC/1907/2006
WEEE Directive - 2012/19/EU

UK:
BS EN 60598-1 and EN 60598-2-4
Electrical Equipment (Safety) Regulations 2016
Electromagnetic Compatibility Regulations 2016
The Restriction of the Use of Certain Hazardous Substances in Electrical and Electronic Equipment Regulations 2012
The Ecodesign for Energy-Related Products and Energy Information (Amendment) (EU Exit) Regulations 2019
The Eurasian Economic Union:
TP TC 004 and TP TC 020

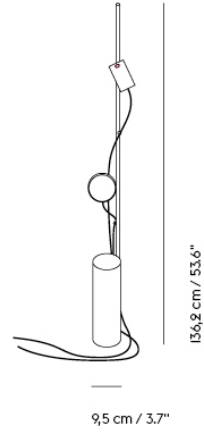
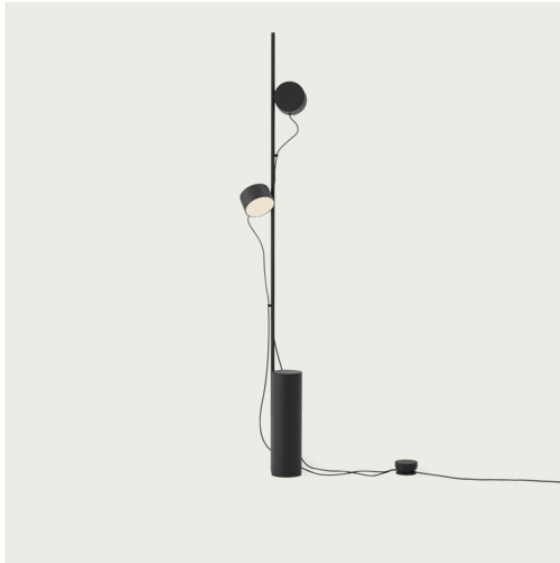
USA/Canada:
UL STD. 153 / CSA STD. C22.2 NO.250.4



Shipper Colli 1
Gross Weight (kg) 1.05
Net Weight (kg) 0.55
Warranty Period 5 years

Item No.	Color	Contract Price	Lead Time
Ready-To-Ship			
22381	Black	SEK 2.536,10	-
Extras			
22509	Extra Wall Mount - Black	SEK 210,70	-
22499	Extra Cable Drops - Black	SEK 270,90	-
22382	Extra Lighting Unit - Black	SEK 2.192,10	-

POST FLOOR LAMP



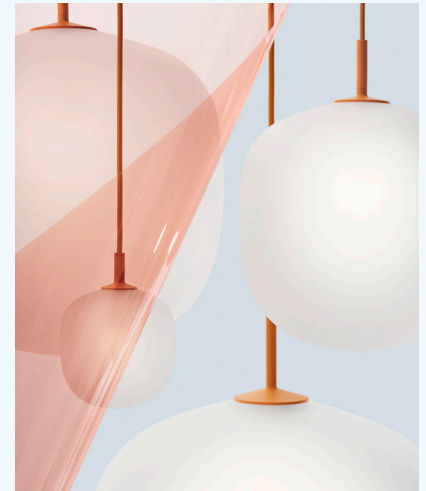
Shipper Colli	1
Gross Weight (kg)	11.4
Net Weight (kg)	8.579
Warranty Period	5 years

Item No.	Color	Contract Price	Lead Time
Ready-To-Ship			
22600	Black	SEK 6.015,70	-
Extras			
22386	Extra Cable Drops - Black	SEK 270,90	-
22382	Extra Lighting Unit - Black	SEK 2.192,10	-

RIME PENDANT LAMP

"Designing simple things is often one of the hardest things to do. We wanted to create a simple lamp with a glass shape, giving it a soft expression while making its top and pendant tube as subtle as possible. We were inspired by the shape of acorns for the gentle lines of the pendant while hinting towards the shaded expression of ice and rime for the glass of the design, allowing for the light to shine slightly through with a refined touch. The Rime Pendant Lamp brings a timeless yet modern perspective to the archetypal light through its translucent shade and graphic form."

— TAF Studio



Designed by	TAF Studio / 2020
Environment	Indoor
Country of Production	Poland
Cord Length	400 cm / 157.5"
Bulb Included	Ø12 and Ø18: Yes / Ø25, Ø37 and Ø45: No
Dimmable Function	Yes - If dimmable bulb is used
Socket Size	Ø12 and Ø18: G9 / Ø25: E14 / Ø37 and Ø45: E27
Ceiling Cap Included	Yes - for pendant lamp Ø12, Ø18 and Ø25: Ø9 / 3.5" H 5,6 cm / 2.2 Ø37 and Ø45: Ø11 / 4.3" H 3,5 / 1.4"
Description	The Rime Lamp Series brings an elegant perspective to the glass light through its semitransparent glass that has been sandblasted for a refined expression. The design features a characteristic form, inspired by the shape of acorns, complemented by its powder coated elements for a subtle touch. Kindly note that the availability of sizes and/or colors of this product are subject to regional stock levels.
Material	Pendant: Mouth-blown glass shade. Aluminum, powder coated top-piece and pendant tube. PVC cord. Wall lamp: Mouth-blown glass shade. Consol arm in aluminum, pressure die-casted and powder coated. Wall bracket in steel and chrome plated.
Cleaning & Care	Clean with a moist cloth. If necessary, use a little dish soap on the cloth. Always switch off the electricity supply before cleaning.

TESTS & CERTIFICATIONS

EU:

IEC 60598-1 and IEC 60598-2-1

Low Voltage Directive (LVD) - 2014/35/EU

ECO Design Directive - 245/2009/EC

ROHS Directive - 2011/65/EU amended RoHS 3 Directive 2015/863

REACH Directive - EC/1907/2006

WEEE Directive - 2012/19/EU

UK:

BS EN 60598-1 and BS 4533-102.1, EN 60598-2-1

Electrical Equipment (Safety) Regulations 2016

Electromagnetic Compatibility Regulations 2016

The Restriction of the Use of Certain Hazardous Substances in Electrical and Electronic Equipment Regulations 2012

The Ecodesign for Energy-Related Products and Energy Information (Amendment) (EU Exit) Regulations 2019

USA/Canada*:

UL STD. 1598 / CSA STD. C22.2 NO.250.0

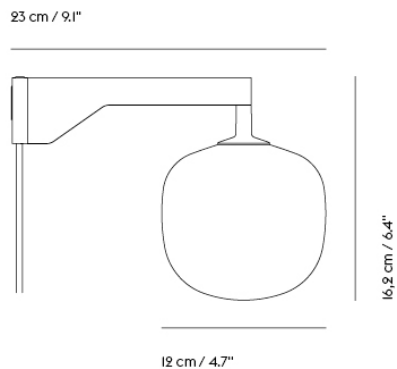
Australia/New Zealand**:

AS/NZS 60598.1 and AS/NZS 60598.2.1

* Does not apply to Rime Ø12 and Rime Wall

** Does not apply to Rime Wall

RIME WALL LAMP



Shipper Colli	1
Gross Weight (kg)	0.694
Net Weight (kg)	0.3
Warranty Period	5 years

Item No.	Color	Contract Price	Lead Time
Ready-To-Ship			
22427	Black	SEK 3.005,70	-
22428	Grey	SEK 3.005,70	-
22429	Orange	SEK 3.005,70	-
22426	White	SEK 3.005,70	-

TIP LAMP SERIES

"The Tip Lamp Series is a simplistic and friendly design featuring a characteristic architectural silhouette. During the design process, we focused on polishing every single detail alongside the design's functionality. I wanted to reduce the design to the very essence of its purpose—intending to create a product that anyone would understand and be able to use in their daily lives. Its molded body gives the Tip Lamp Series a clean and precise look, highlighting its appearance of quality."

— Jens Fager



Designed by	Jens Fager / 2017 and 2020
Environment	Indoor
Country of Production	China
Cord Length	250 cm / 98.5"
Bulb Included	Yes - integrated LED
Dimmable Function	Yes
Description	Created from the idea of stripping a design down to its essentials, the Tip Lamp Series is an example of simple, functional design with careful attention to detail. Offering direct as well as ambient light, the lamp's adjustable head feature an opal diffuser and dimmer function that effortlessly alters the volume of light.
Material	Casted and extruded aluminum. It has a build-in energy-efficient LED bulb with a Lumen Maintenance (Lifetime) of L90 BIO 35.000 hours. Cord in PVC.
Cleaning & Care	Clean with soft dry cloth only. Always switch off the electricity supply before cleaning.

TESTS & CERTIFICATIONS

EU:

Tip Table / Tip Floor: IEC 60598-1 and IEC 60598-2-4
 Tip Wall: IEC 60598-1 and IEC 60598-2-1
 Low Voltage Directive (LVD) - 2014/35/EU
 ECO Design Directive - 245/2009/EC
 ROHS Directive - 2011/65/EU amended RoHS 3 Directive 2015/863
 REACH Directive - EC/1907/2006
 WEEE Directive - 2012/19/EU

UK:

Tip Table / Tip Floor: BS EN 60598-1 and EN 60598-2-4
 Tip Wall: BS EN 60598-1 and BS 4533-102.1, EN 60598-2-1
 Electrical Equipment (Safety) Regulations 2016
 Electromagnetic Compatibility Regulations 2016
 The Restriction of the Use of Certain Hazardous Substances in Electrical and Electronic Equipment Regulations 2012
 The Ecodesign for Energy-Related Products and Energy Information (Amendment) (EU Exit) Regulations 2019

USA/Canada:

Tip Table & Tip Wall: UL STD. I53 / CSA STD. C22.2 NO.250.4
 Tip Wall: UL STD. I598 / CSA STD. C22.2 NO.250.0

Australia/New Zealand:

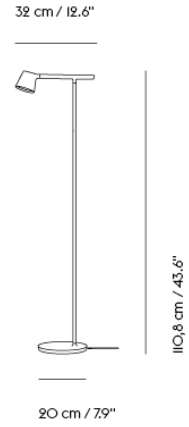
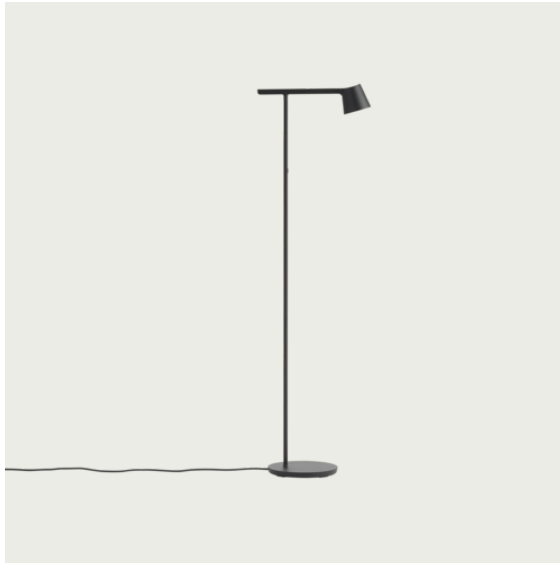
Tip Table & Tip Wall: AS/NZS 60598.1 and AS/NZS 60598.2.4
 Tip Wall: AS/NZS 60598.1 and AS/NZS 60598.2.1



Shipper Colli 1
Gross Weight (kg) 2.35
Net Weight (kg) 1.5
Warranty Period 5 years

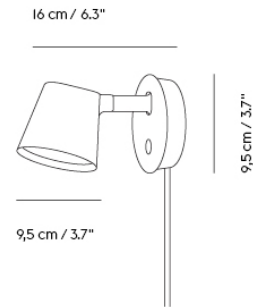
Item No.	Color	Contract Price	Lead Time
Ready-To-Ship			
22321	Black	SEK 2.536,10	-
22323	Copper Brown	SEK 2.536,10	-
22320	Grey	SEK 2.536,10	-
22322	White	SEK 2.536,10	-

TIP FLOOR LAMP



Shipper Colli 1
Gross Weight (kg) 5.313
Net Weight (kg) 2.6
Warranty Period 5 years

Item No.	Color	Contract Price	Lead Time
Ready-To-Ship			
22317	Black	SEK 4.037,70	-
22316	Grey	SEK 4.037,70	-
22318	White	SEK 4.037,70	-



Shipper Colli 1
Gross Weight (kg) 0.751
Net Weight (kg) 0.48
Warranty Period 5 years

Item No.	Color	Contract Price	Lead Time
Ready-To-Ship			
22326	Black	SEK 1.762,10	-
22328	Copper Brown	SEK 1.762,10	-
22325	Grey	SEK 1.762,10	-
22327	White	SEK 1.762,10	-

MATERIAL TEXTURES

At Muuto, we use an expanded breadth of materials to express our ideas of new perspectives on Scandinavian design. Working with leading suppliers across the world, we strive to use materials that embody our quality standards to provide designs that'll pass the test of time and bring a modern touch to any space at one and the same time. Explore the various textures of materials that are used throughout the Muuto universe.

WOOD



Ash



Full Colored Lacquered Oak



Lacquered MDF



Oak Veneer



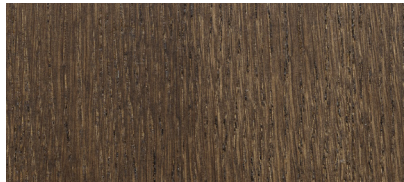
Solid Oak, Natural Oil



Solid Oak White Pigmented Oil

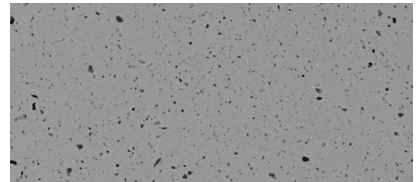


Oregon Pine

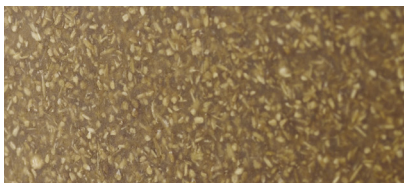


Stained Dark Brown Oak Veneer

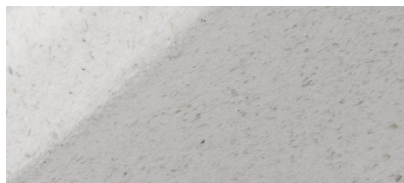
STONE ACRYLIC COMPOSITE



PLASTIC & WOOD COMPOSITE

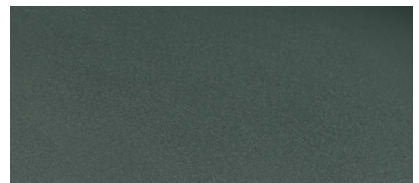


Bamboo Wood & Plastic Composite



Wood & Plastic Composite

RECYCLED PLASTIC



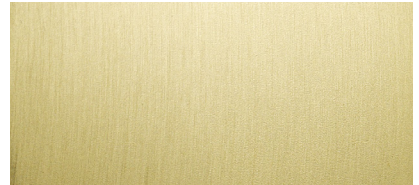
METAL



Anodized Aluminum



Lacquered Steel

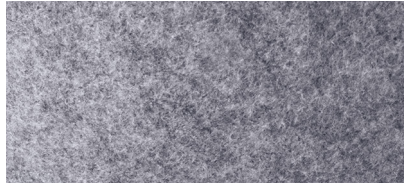


Solid Brass Aluminum



Lacquered Aluminum

POLYMER FELT



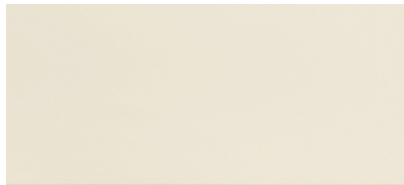
SILICONE RUBBER



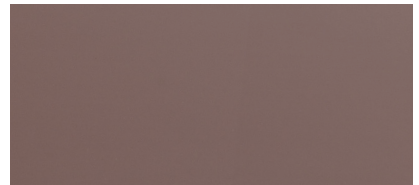
LINOLEUM



LAMINATE



NANOLAMINATE



CERAMICS



CORK



COLOR CODE INDEX

PRODUCT

Ambit Wall Lamp L37 - Black
 Ambit Wall Lamp L37 - Grey
 Ambit Wall Lamp L37 - Taupe
 Ambit Wall Lamp L37 - White
 Control Lamp - Black
 Control Lamp - Grey
 Control Lamp - Red
 Control Lamp - White
 Ease Portable Lamp - Black
 Ease Portable Lamp - Grey
 Ease Portable Lamp - Light Blue
 Ease Portable Lamp - Taupe
 Focus Table Lamp - Black
 Leaf Lamp - Large - Black
 Leaf Lamp - Large - Copper Brown
 Leaf Lamp - Large - Dark Green
 Leaf Lamp - Large - Grey
 Leaf Lamp - Large - White
 Leaf Lamp - Small - Black
 Leaf Lamp - Small - Copper Brown
 Leaf Lamp - Small - Dark Green
 Leaf Lamp - Small - Grey
 Leaf Lamp - Small - White
 Linear - Table Lamp - Black - EU
 Linear - Table Lamp - Grey - EU
 Post - Floor Lamp
 Post - Wall Lamp
 Rime Wall - Black
 Rime Wall - Grey
 Rime Wall - Orange
 Rime Wall - White
 Tip Floor Lamp - Black
 Tip Floor Lamp - Grey
 Tip Floor Lamp - White
 Tip Table Lamp - Black
 Tip Table Lamp - Copper Brown
 Tip Table Lamp - Grey
 Tip Table Lamp - White
 Tip Wall Lamp - Black
 Tip Wall Lamp - Copper Brown
 Tip Wall Lamp - Grey
 Tip Wall Lamp - White

COLOR CODES

EXTERIOR: Black (RAL 7021), INTERIOR: White (RAL 9016)
 EXTERIOR: Grey (RAL 7040), INTERIOR: White (RAL 9016)
 EXTERIOR: Taupe (NCS S 6005-Y5OR), INTERIOR: White (RAL 9016)
 EXTERIOR: White (RAL 9016), INTERIOR: White (RAL 9016)
 Black
 Grey (Pantone 7534 C)
 Red (Pantone 7619 C)
 White (RAL 9016)
 RAL 9011
 RAL 7044
 NCS S 2020-R90B
 RAL 7006
 Black (RAL 9017)
 RAL 9011
 Copper Brown (RAL 8004)
 Dark Green (RAL 6012)
 RAL 7040
 RAL 9016
 Black (RAL 9011)
 Copper Brown (RAL 8004)
 Dark Green (RAL 6012)
 RAL 7040
 White (RAL 9016)
 RAL 9011
 RAL 7044
 RAL 9011
 RAL 9011
 RAL 9011
 RAL 7044
 RAL 2000
 RAL 9016
 RAL 9011
 RAL 7044
 RAL 9016
 Black (RAL 9011)
 Copper Brown (RAL 8004)
 RAL 7044
 White (RAL 9016)
 RAL 9011
 RAL 8004
 RAL 7044
 RAL 9016

NEAREST MATCH

EXTERIOR: Pantone 426 C, NCS 8505-R8OB, INTERIOR: NCS S 0300-N
 EXTERIOR: Pantone Cool Grey 7C, NCS 4005-R8OB, INTERIOR: NCS S 0300-N
 EXTERIOR: Taupe (NCS S 6005-Y5OR), INTERIOR: White (RAL 9016)
 EXTERIOR: White (RAL 9016), INTERIOR: White (RAL 9016) (close to RAL 7021)
 RAL Design 090 80 10, NCS S 1505-G90Y
 RAL Design 040 50 60
 NCS S 0300-N
 NCS S 8500-N, Pantone 426 C
 NCS S 2502-Y, Pantone 401 U
 RAL 250 70 15, Pantone 2155 C
 NCS S 6005-Y2OR, Pantone 404 C
 Pantone Black C, NCS S 9000-N
 NCS S 9000-N, Pantone 426 C
 Pantone 1685 C, NCS S 5040-Y6OR
 -
 NCS S 4005-R8OB, Pantone Cool Grey 7C
 NCS S 0300-N
 NCS S 9000-N, Pantone 426 C
 Pantone 1685 C, NCS S 5040-Y6OR
 -
 NCS S 4005-R8OB, Pantone Cool Grey 7C
 NCS S 0300-N
 -
 -
 NCS S 9000-N, Pantone 426 C
 NCS S 9000-N, Pantone 426 C
 -
 -
 -
 -
 -
 Pantone 426 C, RAL Design 000 15 00
 -
 NCS S 0500-N
 Pantone 426 C, RAL Design 000 15 00
 Pantone 1685 C, NCS S 5040-Y6OR
 -
 NCS S 0500-N
 Pantone 426 C, RAL Design 000 15 00
 Pantone 1685 C, NCS S 5040-Y6OR
 -
 NCS S 0500-N

TEXTILE OPTIONS

Striving to work with the best suppliers, the textiles used for Muuto products are by four different companies: Danish Kvadrat and Swedish Nevotex along with both Arve from Italy and Rohlede from Germany—all suppliers that have been selected on the basis of their extensive knowledge within the field and state-of-the-art material qualities.

*Upholstered Muuto products that have the Declare Living Building Challenge Compliant certification only have the certification when upholstered with the following Kvadrat textiles: Canvas, Clara, Divina, Divina MD, Divina Mélange, Fiord, Hallingdal, Remix, Rime, Steelcut, Steelcut Trio and Vidar.



BALDER BY KVADRAT

Designer: Fanny Aronsen.

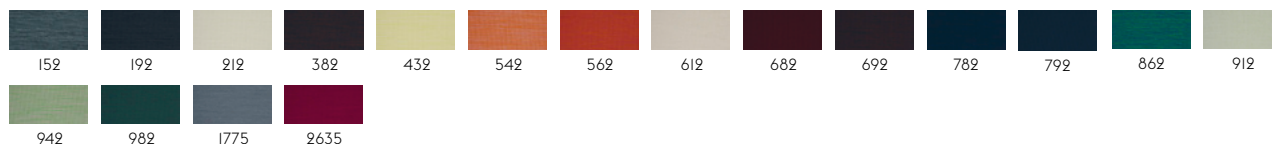
Composition: 68% new wool, 26% cotton, 6% nylon.

Durability: 100.000 Martindale / Lightfastness 6.

Sustainability: Natural fibres / Sustainable resource. Complies with Greenguard Gold Certification.



132



CANVAS BY KVADRAT

Designer: Giulio Ridolfo.

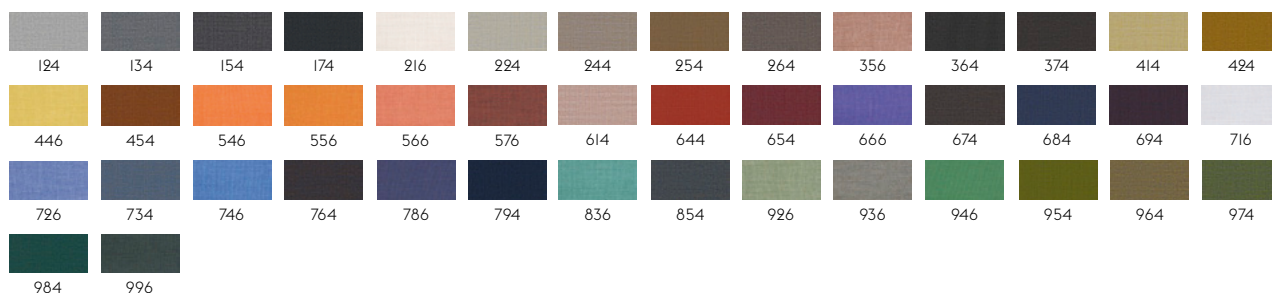
Composition: 90% new wool worsted, 10% nylon.

Durability: 100.000 Martindale / Lightfastness 5-7 (ISO 1-8).

Sustainability: Complies with both EU ecolabel "The Flower" and Greenguard Gold Certification.



114



CLARA BY KVADRAT

Designer: Anne Birgitte Hansen.

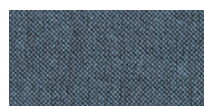
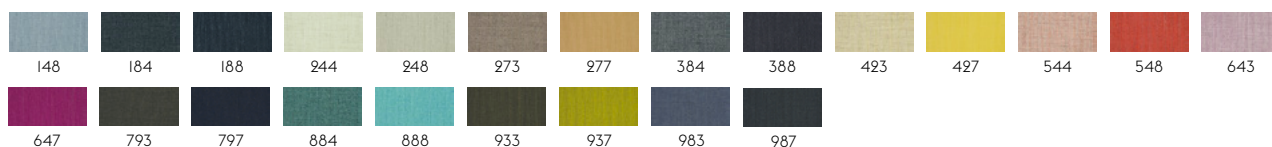
Composition: 92% new wool worsted.

Durability: 80.000 Martindale.

Sustainability: Complies with both EU ecolabel "The Flower" and Greenguard Gold Certification.



144



CLAY BY KVADRAT

Designer: Vincent Van Duysen for Kvadrat.

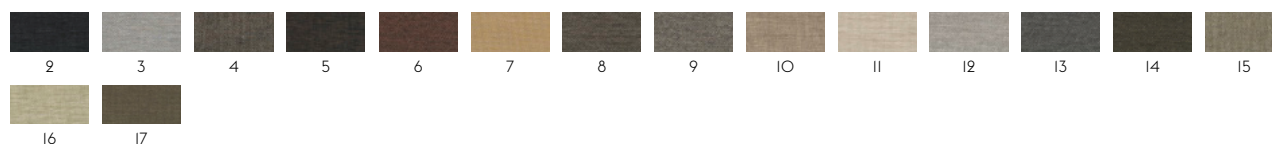
Composition: 76% Linen, 21% Cotton, 3% Polyester.

Durability: 45.000 Martindale / Lightfastness 4-6.

Sustainability: Complies with Greenguard Certification.



1



COLLINE BY KVADRAT

Designer: Frans Dijkmeijer

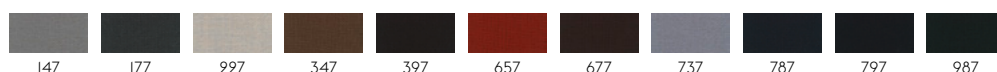
Composition: 75% New Wool, Worsted, 17% polyacrylic, 8% Nylon

Durability: 100.000 Martindale / Lightfastness 7

Sustainability: Greenguard Gold, HPD, EPD



127



18% rabatt ska dras av på angivna priser



DIVINA BY KVADRAT

Designer: Finn Sködt.

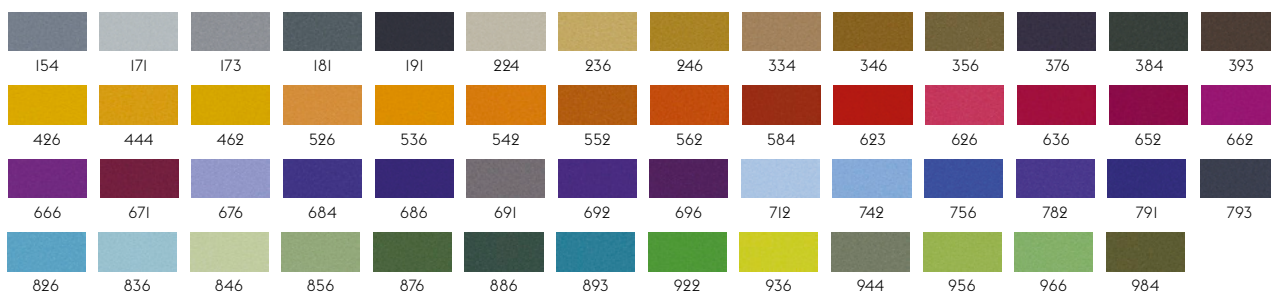
Composition: 100% new wool.

Durability: 45.000 Martindale / Lightfastness 5-6.

Sustainability: Complies with both EU ecolabel "The Flower" and Greenguard Gold Certification.



106



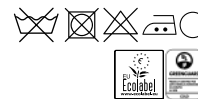
DIVINA MD BY KVADRAT

Designer: Finn Sködt.

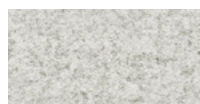
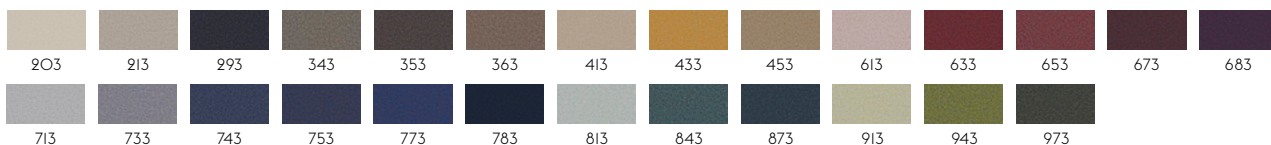
Composition: 100% new wool.

Durability: 45.000 Martindale / Lightfastness 5-6 (ISO 1-8).

Sustainability: Complies with both EU ecolabel "The Flower" and Greenguard Gold Certification.



193



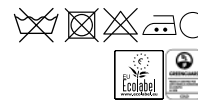
DIVINA MELANGE BY KVADRAT

Designer: Finn Sködt.

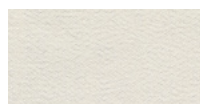
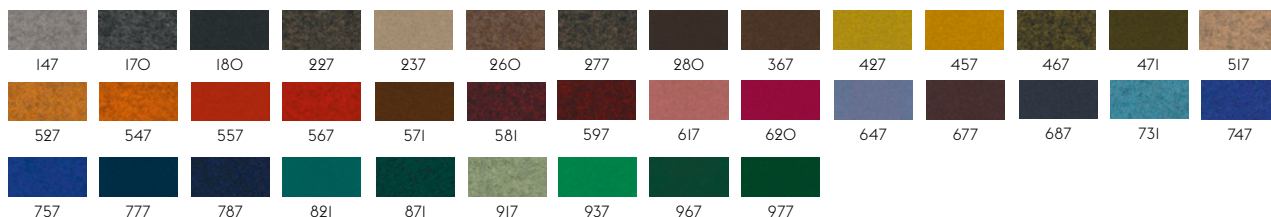
Composition: 100% new wool.

Durability: 45.000 Martindale / Lightfastness 6-7.

Sustainability: Complies with both EU ecolabel "The Flower" and Greenguard Gold Certification.



120



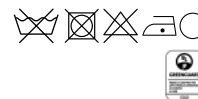
ECRITURE BY KVADRAT

Designer: Sahco.

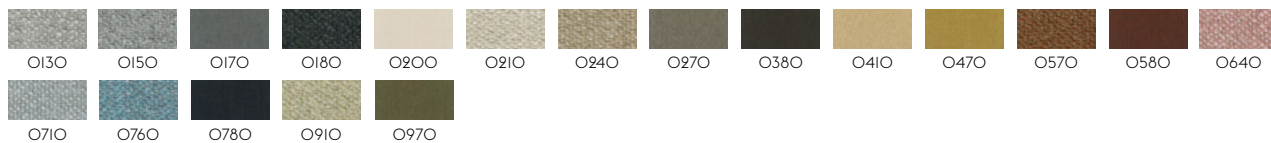
Composition: 40% polyacrylic, 27% polyester, 18% viscose, 9% linen, 6% cotton.

Durability: 70.000 Martindale / Lightfastness 6.

Sustainability: Complies with Greenguard Gold Certification.



0100

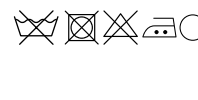


FIORD BY KVADRAT

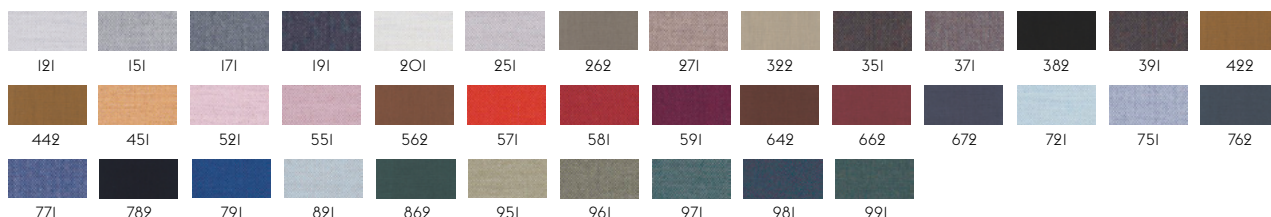
Designer: Tone Barnung & Louise Sigvardt.

Composition: 92% new wool worsted, 8% nylon.

Durability: 60.000 Martindale / Lightfastness 5-6.



101



18% rabatt ska dras av på angivna priser

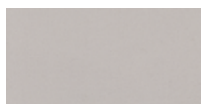
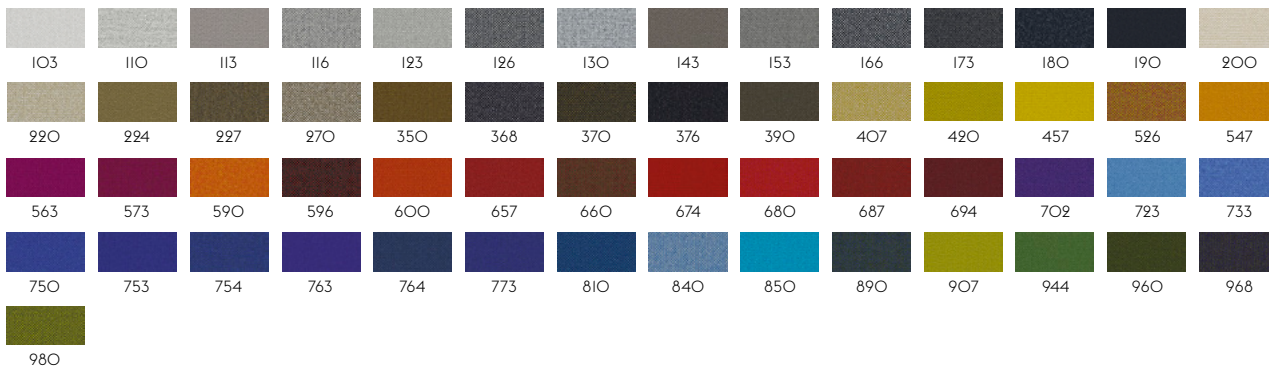


HALLINGDAL 65 BY KVADRAT

Designer: Nanna Ditzel.
Composition: 70% new wool, 30% viscose.
Durability: 100.000 Martindale / Lightfastness 6-7.
Sustainability: Complies with both EU ecolabel "The Flower" and Greenguard Gold Certification.

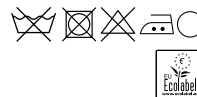


100

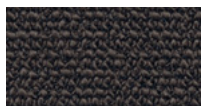
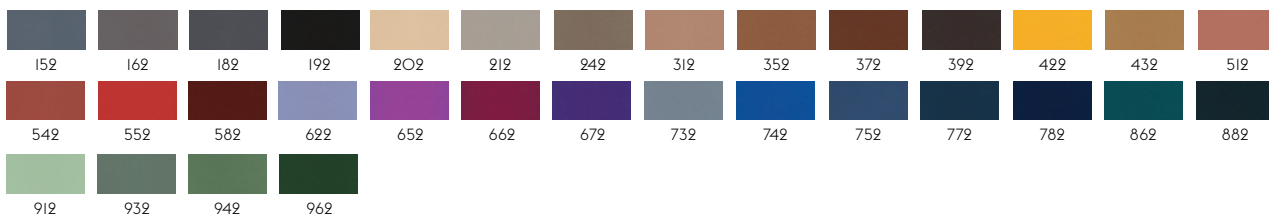


HERO BY KVADRAT

Designer: Patricia Urquiola.
Composition: 96% new wool, 4% nylon.
Durability: 45.000 Martindale / Lightfastness 5-6.
Sustainability: Complies with EU ecolabel "The Flower".



102

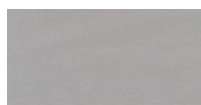
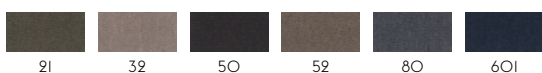


OCEAN BY ROHLEDER

Designer: Rohleder.
Composition: 74% Polyacrylic / 26% Polyester.
Durability: 30.000 Martindale / Lightfastness 5-7 (ISO I-8).

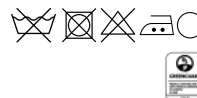


3

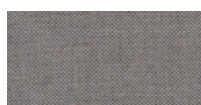
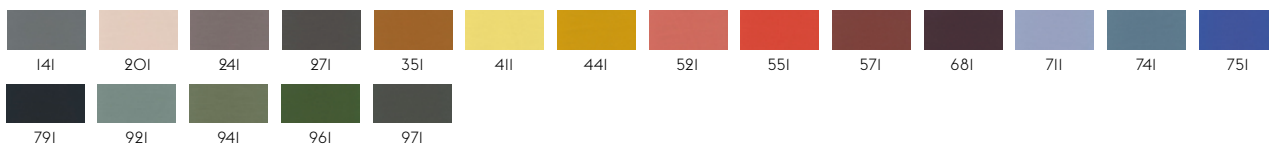


PLANUM BY KVADRAT

Designer: Raw Color.
Composition: 44% new wool, 42% polyester, 14% nylon.
Durability: 100.000 Martindale / Lightfastness 5-6 (ISO I-8).
Sustainability: Complies with Greenguard Certification.

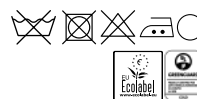


111

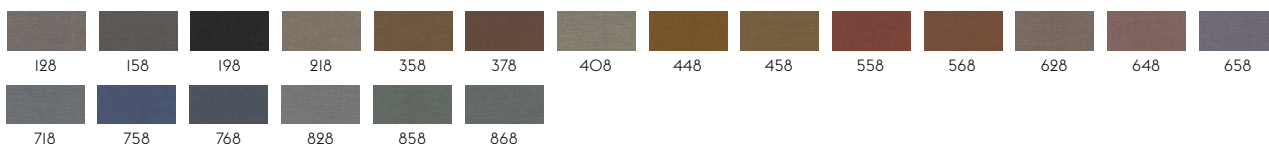


RE-WOOL BY KVADRAT

Designer: Margrethe Odgaard.
Composition: 45% new wool worsted, 45% recycled wool, 10% nylon.
Durability: 100.000 Martindale / Lightfastness 5-7 (ISO I-8).
Sustainability: Complies with both EU ecolabel "The Flower" and Greenguard Gold Certification.



108



18% rabatt ska dras av på angivna priser



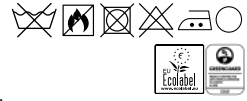
REMIX BY KVADRAT

Designer: Giulio Ridolfo.

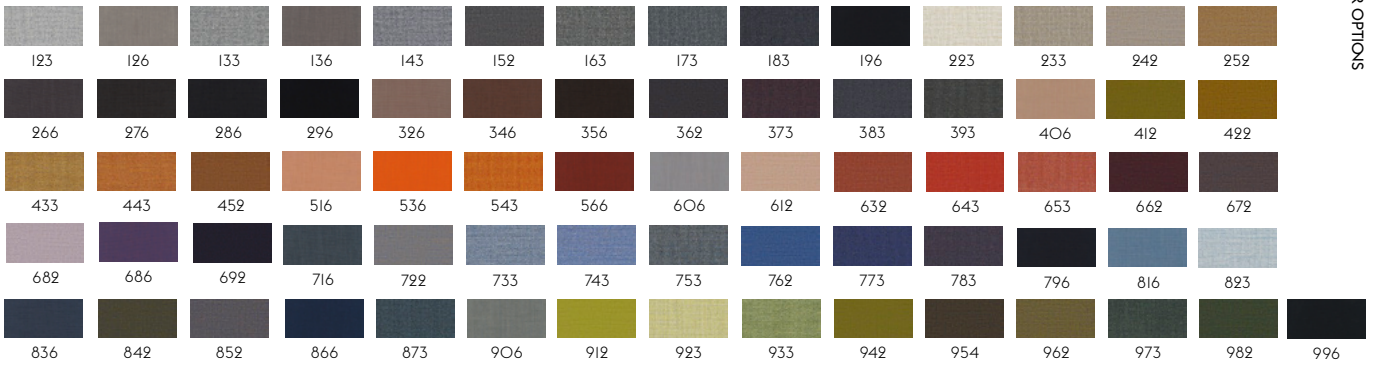
Composition: 90% new wool worsted, 10% nylon.

Durability: 100,000 Martindale / Lightfastness 5-7 (ISO I-8).

Sustainability: Complies with both EU ecolabel "The Flower" and Greenguard Gold Certification.



113



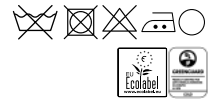
RIME BY KVADRAT

Designer: Åsa Pärson.

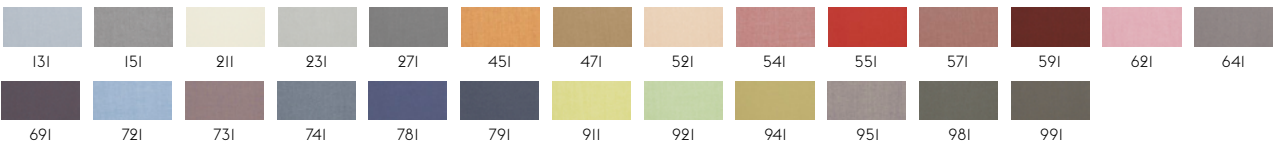
Composition: 90% new wool worsted, 10% nylon.

Durability: 100,000 Martindale / Lightfastness 5-7 (ISO I-8).

Sustainability: Complies with both EU ecolabel "The Flower" and Greenguard Gold Certification.



111



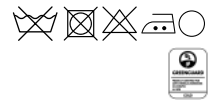
SABI BY KVADRAT

Designer: Louise Sigvardt

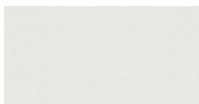
Composition: 65% New Wool, Worsted, 23% Recycled Wool, 12% Nylon

Durability: 80,000 Martindale / Lightfastness 5-7

Sustainability: Greenguard Gold, HPD, EPD



121



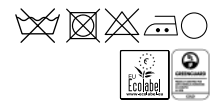
STEELCUT BY KVADRAT

Designer: Dijkmeijer & Ridolfo.

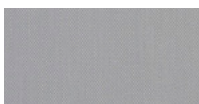
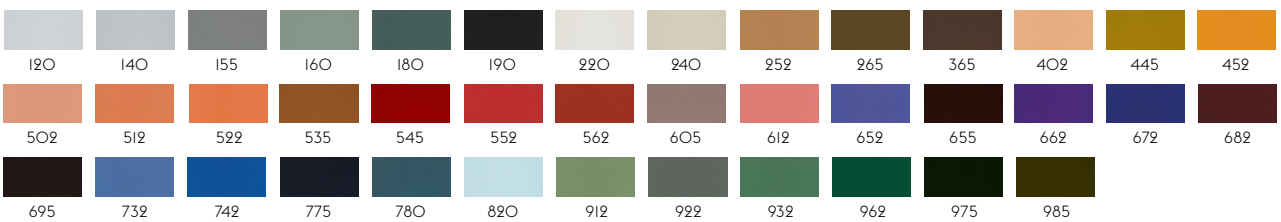
Composition: 90% new wool worsted, 10% nylon.

Durability: 80,000 Martindale / Lightfastness 5-7 (ISO I-8).

Sustainability: Complies with both EU ecolabel "The Flower" and Greenguard Gold Certification.



110



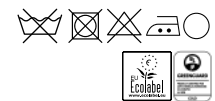
STEELCUT TRIO BY KVADRAT

Designer: Dijkmeijer & Ridolfo.

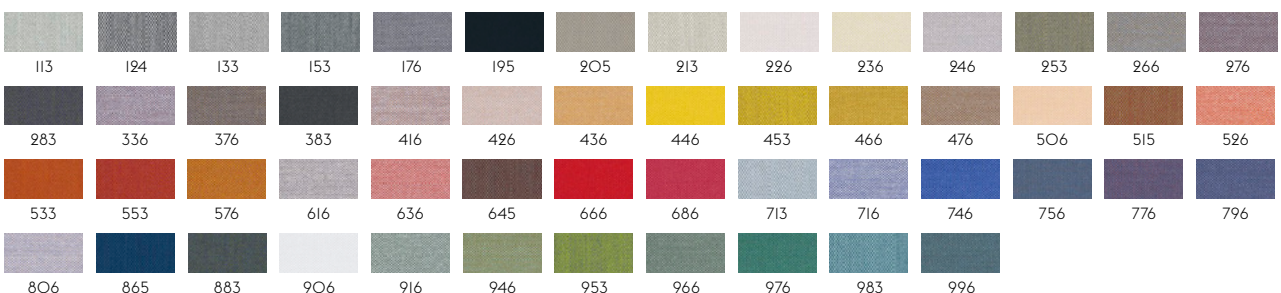
Composition: 90% new wool worsted, 10% nylon.

Durability: 100,000 martindale / Lightfastness 5-7 (ISO I-8).

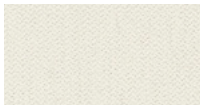
Sustainability: Complies with both EU ecolabel "The Flower" and Greenguard Gold Certification.



105



18% rabatt ska dras av på angivna priser

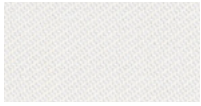
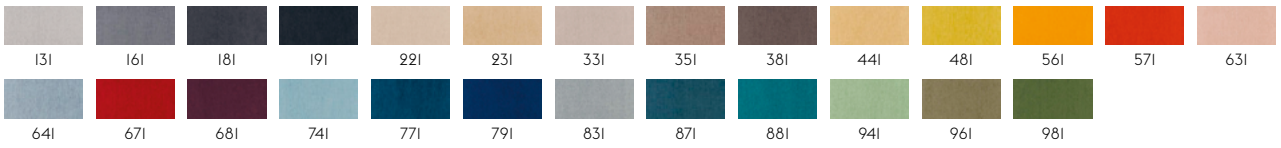


STILL BY KVADRAT

Designer: Georgina Wright.
Composition: 100% Trevira CS.
Durability: 50.000 Martindale / Lightfastness: 6

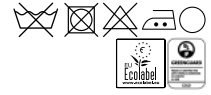


III

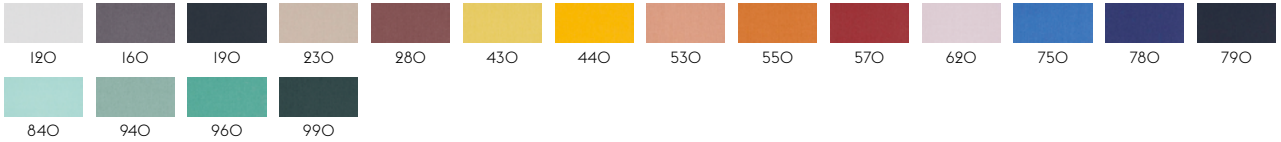


TWILL WEAVE BY KVADRAT

Designer: Jonathan Olivares.
Composition: 90% new wool (worsted), 10% nylon.
Durability: 60.000 Martindale / Lightfastness 5-7 (ISO I-8).
Sustainability: Complies with both EU ecolabel "The Flower" and Greenguard Gold Certification.



IIO

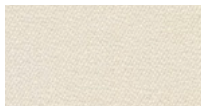


VANCOUVER BY ROSSINI DELLA QUERCIA

Designer: Gabriella Zecca
Composition: 52% cotton, 48% acrylic.
Durability: 40.000 Martindale / Lightfastness 4-5.

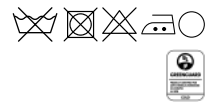


4

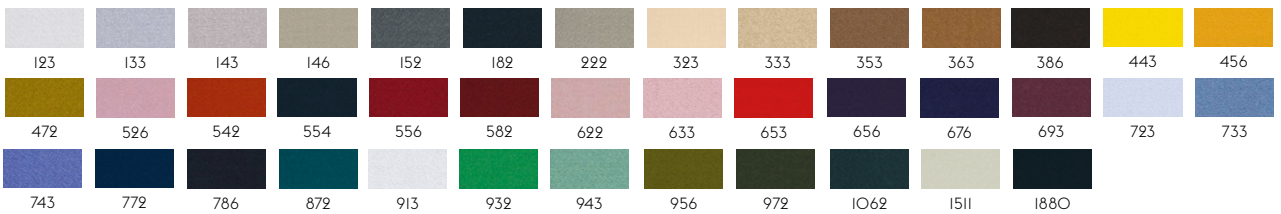


VIDAR BY KVADRAT

Designer: Raf Simons & Fanny Aronsen for Kvadrat.
Composition: 94% new wool, 6% nylon.
Durability: 100.000 Martindale / Lightfastness 6-7.
Sustainability: Natural fibres / Sustainable resource. Complies with Greenguard Gold Certification.



IO6



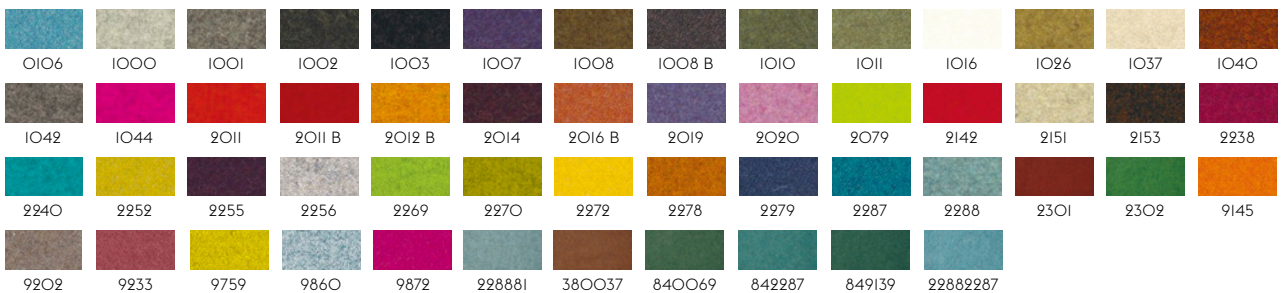
WOOLY BY NEVOTEX

Designer: Nevotex
Composition: 70% wool, 25% polyamide, 5% other fibres.
Durability: 150.000 Martindale / Lightfastness 6-8.



0091

Wooly is woven in 70% recycled wool, sourced from leftover materials of clothing production and other wool products. One kilo of pure new wool generates 9 kilograms of carbon dioxide when produced while processing one kilo of recycled wool only generates 0.5 kilograms of carbon dioxide. Furthermore, recycled wool has a positive environmental impact due to lessened water consumption and lower energy consumption.



18% rabatt ska dras av på angivna priser

LEATHER OPTIONS

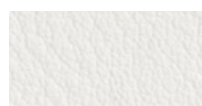
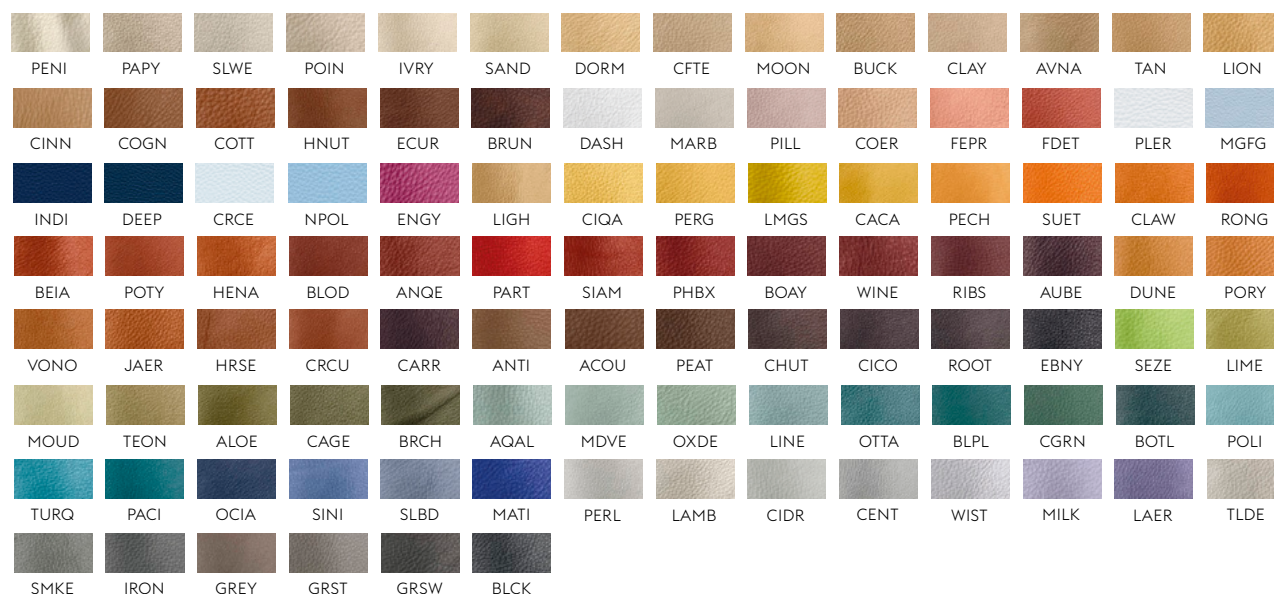
At Muuto, we work with some of the leading European leather suppliers to ensure that the leather used for our designs is always of the highest possible standard. Our leather options range from the Refine Leather, a modern and sleek full-grain leather with a soft touch, over Easy Leather, a lightly buffed natural grain leather with a soft and waxy feel along with a matte look, to our Endure Leather, a pliable and extremely durable semi-aniline leather ideal for hard contract environments.



EASY LEATHER

Lightly Buffed Natural Grain Leather
Raw material: Designed and processed in Italy. The leather is dyed through, chrome tanned and finishing is with resins and pigments.

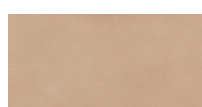
ZINC



ENDURE LEATHER

Semi-aniline leather with high durability, making it ideal for contract environments.
Raw material: Leather from Scandinavian raw hides.
The leather is dyed through a chrome free tanning process. Also available in custom colors in a minimum of 1 hide.

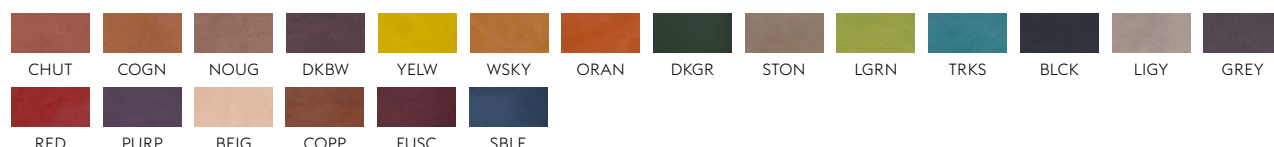
CWIT



REFINE LEATHER

Aniline Leather.
Raw material: Grain leather from European raw hides. The leather is dyed through, chrome tanned and produced without the use of PCP and CFC which can be damaging to the environment.

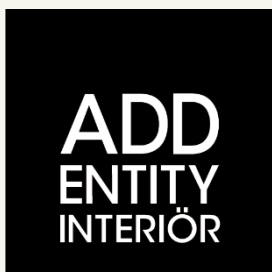
CREM



18% rabatt ska dras av på angivna priser

MORGONDAGENS REUSE!

Kvalitet gör skillnad. I dagens resursslösande värld behövs produkter som håller och ger ett bestående värde den dag man inte behöver den längre. Därför uppfyller våra producenter branschens hårdaste miljö- och kvalitetskrav.



Addentity Interiör AB
Östra Rönneholmsvägen 5
211 47 Malmö

Telefon: 0733-335020
avropa@addentityinterior.se

Org.nummer: 556839-3416
Avtalsnummer: 23.3-8004-18:008

18% rabatt ska dras av på angivna priser