



25% rabatt ska dras av på angivna priser



primetex.

Produktlista nr 1.



Möbeltyg

*Statligt Ramavtal Möbler och Inredning
Avtal 23.3-8004-18:007, Delområde C,
Textil inredning för fönster miljö*



VI SKAPAR DEN PERFEKTA ARBETSMILJÖN.

25% rabatt ska dras av på angivna priser



Gardiner.

Med textilens stora mångfald och ökande betydelse som inredningsmaterial, finns det oändliga möjligheter att skapa en trevlig, effektiv och sund arbetsmiljö.

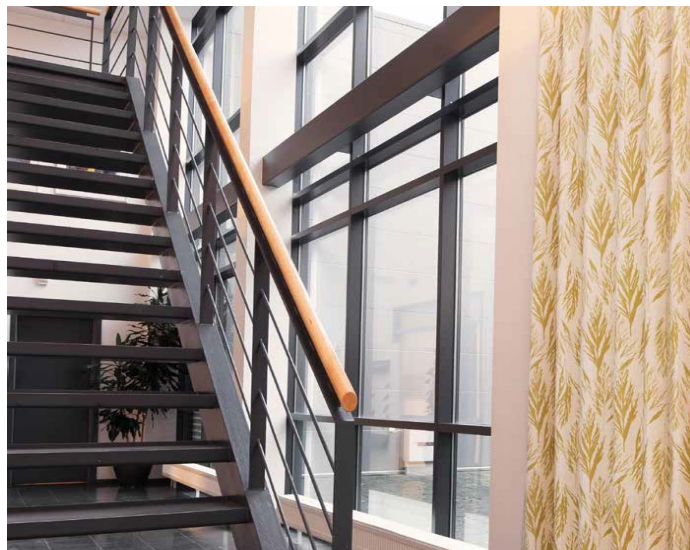


Solskydd.

Vad ska jag välja? Kontakta någon av våra duktiga tekniker eller säljare så får du hjälp att välja rätt produkt, väv och uppsättning för just er arbetsplats. Du får rätt inneklimat som höjer prestationen både hos dig själv och dina medarbetare.

Tapetsering.

Möbelomklädnad kan sammanfattas kort, hållbarhet, miljö, hantverk, kunskap, förnyelse och kärlek.



Akustik.

Akustik är läran om hörbart ljud, ljud som kan skapa "sjuka" miljöer. Med akustiktextilier, textilier och ljudabsorbenter på vägg eller i tak kan vi förbättra ljudnivån i er arbetsmiljö och skapa ett friskare rum.

www.primetex.se



25% rabatt ska dras av på angivna priser



primetex.

Innehåll sid:

| | |
|---------|----------------------------------|
| 4 | <i>Almedahls</i> |
| 4 | <i>Bute - Casa Rosa</i> |
| 4 - 5 | <i>Camira</i> |
| 5 - 6 | <i>Gabriel</i> |
| 6 | <i>Kirby Design - Romo Group</i> |
| 7 - 8 | <i>Kvadrat</i> |
| 8 | <i>Nevotex</i> |
| 8 | <i>Romo - Romo Group</i> |
| 9 - 10 | <i>Svenssons, Ludvig</i> |
| 10 - 11 | <i>Vescom</i> |
| 11 | <i>Villa Nova - Romo Group</i> |

Våra kontor:

STOCKHOLM

Storgatan 41, 114 55 Stockholm

NORRKÖPING

Fredriksdalsgatan 45, 602 23 Norrköping

GÖTEBORG

Industrivägen 59, 433 61 Sävedalen

MALMÖ

Limhamnsgården allé 27, 216 16 Limhamn

Kontakta oss:

MAIL

avropa@primetex.se

INTERNET

www.primetex.se/om-oss/

TELEFON

010 – 205 12 50

**VI SKAPAR DEN
PERFEKTA ARBETSMILJÖN.**





primetex.

25% rabatt ska dras av på angivna priser

almedahls

| Artikel | Komposition | Bredd: | Martindale | Pris/ m |
|---------|------------------------|--------|------------|---------|
| Accent | 100% ull | 140 | > 50.000 | 1337 |
| Bark | 95% Ull 5% Polyamid | 140 | 50.000 | 1494 |
| Combo | 100% Polyester | 140 | 50.000 | 1074 |
| Freja | 100% Polyester | 150 | >100.000 | 832 |
| Memo | 100% Polyester | 150 | >50.000 | 1068 |
| Polar | 73% Ull, 27% Polyester | 140 | >100.000 | 1313 |
| Sugar | 100% Polyester | 140 | >50.000 | 1117 |
| Tartan | 100% Ull | 137 | >40.000 | 1263 |
| Twist | 100% Polyester | 140 | >50.000 | 725 |
| Vilano | 83% Ull, 17% Polyamid | 140 | >100.000 | 1074 |
| Velvet | 100% Polyester | 140 | >50.000 | 857 |

CASA ROSA bute

| Artikel | Komposition | Bredd | Pris /m |
|-----------|-----------------------------------|-------|---------|
| Alchemy | 94% WO 6% NY | 140 | 1184 |
| Clan | 68% WO 21% PA 11% SI | 140 | 1212 |
| Elgin | 92% WO 8% NY | 140 | 1122 |
| Kin | 68% WO 21% PA 11% SI | 140 | 1212 |
| Lewis | 100% ull | 140 | 1616 |
| Magic | 70% WO | 140 | 820 |
| Mason | 76% WO, 21% PA, 3% övriga fibrer* | 140 | 1212 |
| Mercury | 87% WO | 140 | 820 |
| Mineral | 76% WO, 21% PA, 3% övriga fibrer* | 140 | 1212 |
| Ramshead | 85% WO 15% NY | 140 | 958 |
| Storr | 97% WO 3% NY | 140 | 2184 |
| Tiree | 92% WO 8% NY | 140 | 1730 |
| Troon | 92% WO 8% NY | 140 | 1026 |
| Turnberry | 92% WO 8% NY | 140 | 1026 |
| Tweed | 100% ull | 140 | 1232 |

camira

| Artikel: | Bredd: | Komposition: | Pris /m |
|-----------------|--------|-------------------------------|---------|
| <i>Möbeltyg</i> | | | |
| Aspect | 140 | 75% TreviraCS, 25% Polyester. | 390 |
| Blazer | 140 | 100% Virgin Wool | 625 |
| Era | 140 | 100% polyester | 238 |
| Hemp | 140 | 60% wool, 40% True Hemp | 628 |



primetex.

25% rabatt ska dras av på

camira

| Artikel: | Bredd: | Komposition: | Pris /m |
|-------------------------|--------|--|---------|
| Möbeltyg | | | |
| Main Line Flax | 140 | 70% wool, 30% Flax | 398 |
| Patina | 140 | 69% Wool, 22% Flax, 8% Polyamide, 1% viscose | 390 |
| Rivet | 140 | 100% Repreve Recycled Polyester | 238 |
| Synergy | 140 | 95% Wool, 5% Polyamide | 595 |
| Xtreme CS | 140 | 100% Repreve Recycled Polyester | 383 |
| X2 | 140 | 100% Recycled FR Polyester | 385 |
| Textil skärmvägg | | | |
| Blazer Lite | 170 | 100% Virgin Wool | 534 |
| Cara | 170 | 100% Polypropylene | 187 |
| Castillo | 170 | 100% Polypropylene FR | 233 |
| Era 170 | 170 | 100% polyester | 241 |
| Fiji (Full rolls only) | 170 | 100% polyester | 187 |
| Lucia | 170 | 100% Recycled Polyester | 289 |
| Lucia CS | 170 | 100% Trevira CS | 338 |
| Nexus | 173 | 100% polyester | 489 |
| Racer | 170 | 100% polyester | 293 |
| Sonus | 170 | 95% Wool, 5% polyamide | 304 |
| Synergy 170 | 170 | 100% Recycled Polyester | 646 |

Gabriel®

| Artikel | Komposition | Bredd | Martindale | Pris /m | Pris /m |
|---------------------|---|-------|------------|---------|---------|
| | | | | >25 m | < 25 m |
| Möbeltyg | | | | | |
| Atlantic | 100% polyester | 150 | 110.000 | 462 | 532 |
| Bond | 98% återvunnen polyester av konsumtionsavfall, 2% pe | 140 | 100.000 | 483 | 555 |
| Breeze Fusion | 88% nyzeeländsk ull, 12% polyamid | 140 | 100.000 | 877 | 1010 |
| Capture Chess Royal | 85% nyzeeländsk ull, 15% polyamid | 140 | 200.000 | 808 | 930 |
| Comfort+ Crisp | 75% återvunnen polyester fr av konsumtionsavfall, 25% pe fr | 140 | 60.000 | 577 | 663 |
| CrissCross | 88% polyester, 12% polyurethan, antistat & FR | 140 | 110.000 | 1354 | 1558 |
| Cura | 98% återvunnen polyester av konsumtionsavfall, 2% pe | 140 | 100.000 | 423 | 486 |
| Europost 2 Event | 100% nyzeeländsk ull | 140 | 50.000 | 819 | 944 |
| Fame | 95% nyzeeländsk ull, 5% polyamid | 140 | 200.000 | 606 | 697 |
| Fame Hybrid | 95% nyzeeländsk ull, 5% polyamid | 140 | 150.000 | 714 | 820 |
| Felicity | 100% återvunnen polyester av konsumtionsavfall | 140 | 90.000 | 436 | 501 |
| Fighter | 100% polyester | 140 | 130.000 | 341 | 393 |
| Flex | 100% polyester | 140 | 80.000 | 526 | 605 |



primetex.

25% rabatt ska dras av på angivna priser

Gabriel®

| Artikel | Komposition | Bredd | Martindale |
|-------------------------|---|-------|------------|
| <i>Möbeltyg</i> | | | |
| Noma | 50% återvunnen polyester fr av konsumtionsavfall, 50% pe fr | 140 | 60.000 |
| Obika Leather+ | 66% polyurethan, 24% polyester, 10% bomull | 140 | 250.000 |
| Repetto | 100% återvunnen polyester av konsumtionsavfall | 140 | 100.000 |
| Rhythm | 100% polyester/flamskyddad polyester | 160 | 70.000 |
| Runner | 100% polyester | 160 | 70.000 |
| Select | 85% nyzeeländsk ull, 15% polyamid | 140 | 200.000 |
| Spin | 100% Trevira CS | 140 | 70.000 |
| Step | 100% Trevira CS | 140 | 100.000 |
| Step Melange | 100% Trevira CS | 140 | 100.000 |
| Swing | 54% wool, 44% återvunnen pe , 2% pa | 140 | 100.000 |
| Tempt | 100% polyester | 140 | 90.000 |
| Vivid | 80% återvunnen polyester, 20% pe | 140 | 100.000 |
| Web | 76% återvunnen polyester, 24% pe | 140 | 100.000 |
| <i>Textil skärmvägg</i> | | | |
| Atlantic Screen | 100% polyester | 170 | |
| Event Screen+ | 100% polyester | 170 | 80.000 |
| Hush | 80% polyester, 20% viscose | 170 | |
| Soul | 100% ull | 170 | |
| Soul Melange | 84% ull, 16% polyester | 170 | |
| Twist | 100% Trevira CS | 170 | |
| Twist Melange | 100% Trevira CS | 170 | |

| Pris /m | Pris /m |
|---------|---------|
| >25 m | < 25 m |
| 565 | 651 |
| 963 | 1108 |
| 426 | 490 |
| 621 | 714 |
| 576 | 666 |
| 639 | 735 |
| 558 | 642 |
| 420 | 484 |
| 534 | 615 |
| 586 | 675 |
| 580 | 667 |
| 514 | 591 |
| 629 | 723 |
| | |
| 476 | 549 |
| 324 | 374 |
| 347 | 399 |
| 707 | 813 |
| 707 | 813 |
| 373 | 428 |
| 422 | 485 |

ROMO GROUP kirkbydesign

| Artikel | Komposition | Bredd | Pris /m |
|----------------------|-----------------------------------|-------|---------|
| Cloud FR | 54% CO 40% PL 6% MD Pile 100% CO | 133 | 1730 |
| Cricket | 70% återvunnen CO 15% CO 15% VI | 140 | 1580 |
| Crush FR | 93% PL 7% CO | 140 | 560 |
| Ember | 60% PL 40% PC | 140 | 1580 |
| Grade Crib 5 | 60% WO 40% LI | 142 | 830 |
| Hue | 70% VI 30% LI | 138 | 720 |
| Ice | 82% CO 18% PL | 140 | 1030 |
| Laser | 50% PU 30% PL 20% CO | 137 | 350 |
| Layer | 53% VI 17% LI 16% CO 9% PL 5% WO | 138 | 960 |
| Loop | 46% PC 23% WO 15% CO 12% PA 4% PL | 140 | 1110 |
| Orion | 100% Polyester | 140 | 580 |
| Profile | 50% VI 26% LI 23% CO 1% PA | 138 | 1180 |
| Sahara | 100% Bomull | 141 | 360 |
| Smooth III EasyClean | 100 % Polyester | 140 | 570 |



primetex.

25% rabatt ska dras av på angivna priser

kvadrat

| Tyg | Komposition | Bredd | Martindale | Pris /m |
|------------------|--|-------|------------|---------|
| Atlas | 90% ny ull, kamgarn / 10% nylon | 140 | 100 000 | 1074 |
| Balder 3 | 68% ny ull / 26% bomull / 6% nylon | 140 | 100 000 | 1434 |
| Basel | 90% ny ull, kamgarn / 10% nylon | 140 | 50 000 | 1004 |
| Byram | 100% kids mohair bomull (grundväv) | 140 | 70 000 | 2600 |
| Canvas 2 | 90% ny ull, kamgarn / 10% nylon | 140 | 100 000 | 1004 |
| Clara 2 | 92% ny ull, kamgarn / 8% nylon | 138 | 80 000 | 932 |
| Coda 2 | 90% ny ull / 10% nylon | 140 | 100 000 | 1746 |
| Colline | 75% ny ull, kamgarn / 17% acryl / 8% nylon | 140 | 100 000 | 1110 |
| Crystal Field | 53% bomull / 38% ny ull / 9% nylon | 139 | 100 000 | 2350 |
| Divina 3 | 100% ny ull | 150 | 45 000 | 1382 |
| Divina MD | 100% ny ull | 150 | 45 000 | 1448 |
| Divina Melange 3 | 100% ny ull | 150 | 45 000 | 1406 |
| Field 2 | 100% Trevira CS | 140 | 80 000 | 872 |
| Fiord | 92% ny ull, kamgarn / 8% nylon | 140 | 60 000 | 1142 |
| Floyd | 50% polyester / 45% ny ull, kamgarn / 5% nylon | 140 | 50 000 | 962 |
| Forest Nap | 95% ny ull, kamgarn / 5% nylon | 140 | 50000 | 1074 |
| Foss | 76% ny ull, kamgarn / 11% viskos / 8% nylon / | 140 | 100000 | 1142 |
| Glow | 90% ny ull, kamgarn / 10% nylon | 140 | 80000 | 1088 |
| Hallingdal 65 | 70% ny ull / 30% viskos | 130 | 100000 | 1206 |
| Hero | 96% ny ull / 4% nylon | 140 | 45000 | 1412 |
| Highfield 3 | 100% Trevira CS 3 mm FR skum | 140 | 50000 | 1100 |
| *Matrix | 100% Trevira CS | 140 | 60 000 | 1210 |
| Melange Nap | 97% ny ull, kamgarn / 3% nylon | 140 | 60 000 | 1066 |
| Molly 2 | 100% ny ull, kamgarn | 140 | 75 000 | 1184 |
| Parkland | 100% Trevira CS | 140 | 100 000 | 964 |
| Patio | 100% Trevira CS vattenavvisande | 140 | 50 000 | 846 |
| Pro 3 | 100% Trevira CS | 150 | 80 000 | 906 |
| Raas | 92% ny ull, kamgarn / 8% nylon | 142 | 100 000 | 1350 |
| Recheck | 90% ny ull, kamgarn / 10% nylon | 140 | 100 000 | 1120 |
| Remix 2 | 90% ny ull, kamgarn / 10% nylon | 140 | 100 000 | 976 |
| Revive 1 | 100% recycled polyester FR | 140 | 60 000 | 916 |
| *Revive 2 | 100% recycled polyester FR | 140 | 60 000 | 916 |

**primetex.****25% rabatt ska dras av på angivna priser****kvadrat**

| Tyg | Komposition | Bredd | Martindale | Pris / m |
|-----------------|---------------------------------|-------|------------|----------|
| Rime | 90% ny ull, kamgarn / 10% nylon | 140 | 100 000 | 1028 |
| San | 92% ny ull, kamgarn / 8% nylon | 140 | 60 000 | 1066 |
| *Skye | 90% ny ull, kamgarn / 10% nylon | 140 | 100 000 | 1216 |
| *Star 2 | 100% Trevira CS | 140 | 80 000 | 1154 |
| Steelcut 2 | 90% ny ull, kamgarn / 10% nylon | 140 | 100 000 | 1128 |
| Steelcut Trio 3 | 90% ny ull, kamgarn / 10% nylon | 140 | 100 000 | 1180 |
| Still | 100% Trevira CS | 140 | 50 000 | 958 |
| Tonica 2 | 100% ny ull | 140 | 45 000 | 1102 |
| Tonus 4 | 90% ny ull / 10% Helanca | 140 | 100 000 | 1196 |
| Twill Weave | 90% ny ull, kamgarn / 10% nylon | 140 | 60 000 | 1350 |
| *Umami | 90% ny ull, kamgarn / 10% nylon | 140 | 80 000 | 948 |
| Vidar 3 | 94% ny ull / 6% nylon | 140 | 100 000 | 1620 |

nevotex

| Artikel | Komposition | Bredd | Martindale | Pris / m |
|-----------------|------------------|-------|------------|----------|
| <i>Möbeltyg</i> | | | | |
| BLUES CS | 100 % trevira CS | 140 | 80.000 | 748 |
| BLUES CS II | 100 % trevira CS | 140 | 80.000 | 785 |
| CLUB CS | 100 % trevira CS | 140 | 50.000 | 892 |
| FUNK CS | 100 % trevira CS | 140 | 70.000 | 760 |
| JAZZ CS | 100 % trevira CS | 150 | 120.000 | 682 |
| LIDO | 100 % polyester | 140 | 105.700 | 449 |
| LIDO TREND | 100 % polyester | 140 | 105.700 | 449 |
| MAYA CS | 100 % trevira CS | 140 | 100.000 | 558 |
| POD CS | 100 % trevira CS | 140 | 65.000 | 414 |
| POP CS | 100 % trevira CS | 150 | 100.000 | 752 |
| ROCK CS | 100 % trevira CS | 140 | 70.000 | 532 |

ROMO GROUP

| Artikel | Komposition | Bredd | Pris / m |
|---------|----------------------------------|-------|----------|
| Kota | 75% återvunnen CO 25% PL | 140 | 750 |
| Olavi | 45% VI 36% CO 15% PC 4% LI | 138 | 930 |
| Osumi | 80% återvunnen CO, 20% PL | 140 | 620 |
| Roden | 55% VI 24% LI 10% CO 8% PL 3% PA | 140 | 870 |
| Ruskin | 70% VI 15% LI 10% WO 5% PA | 140 | 780 |

**primetex.****25% rabatt ska dras av på angivna priser****svensson**

| Tyg | Komposition | Bredd | Martindale | Pris /m |
|------------------|------------------------------------|-------|------------|---------|
| Accessoire Bok | 5% ull, 15% polyamid | 150 | 50.000 | 936 |
| Accessoire Bok | 5% ull, 15% polyamid | 150 | 50.000 | 936 |
| Accessoire Etage | 5% ull, 15% polyamid | 150 | 50.000 | 936 |
| Accessoire Infra | 5% ull, 15% polyamid | 150 | 50.000 | 936 |
| Accessoire Kajal | 5% ull, 15% polyamid | 150 | 50.000 | 936 |
| Accessoire Lux | 5% ull, 15% polyamid | 150 | 50.000 | 936 |
| Accessoire Nest | 5% ull, 15% polyamid | 150 | 50.000 | 936 |
| Accessoire Pop | 5% ull, 15% polyamid | 150 | 50.000 | 936 |
| Accessoire Riff | 5% ull, 15% polyamid | 150 | 50.000 | 936 |
| Accessoire River | 5% ull, 15% polyamid | 150 | 50.000 | 936 |
| Accessoire Ruby | 5% ull, 15% polyamid | 150 | 50.000 | 936 |
| Accessoire Silk | 5% ull, 15% polyamid | 150 | 50.000 | 936 |
| Be On 4448 | 92% ull, 8% polyamid | 150 | 80.000 | 873 |
| Be On 4445 | 93% ull, 7% polyamid | 150 | 80.000 | 873 |
| Be On 4422 | 93% ull, 7% polyamid | 150 | 80.000 | 873 |
| Be On 4463 | 93% ull, 7% polyamid | 150 | 80.000 | 873 |
| Be on 4423 | 93% ull, 7% polyamid | 150 | 80.000 | 873 |
| Be On 4340 | 93% ull, 7% polyamid | 150 | 80.000 | 873 |
| Be On 4434 | 93% ull, 7% polyamid | 150 | 80.000 | 873 |
| Be On 4343 | 93% ull, 7% polyamid | 150 | 80.000 | 873 |
| Brink | 5% ull, 15% polyamid | 150 | 100.000 | 973 |
| Co Lab Ad On | 5% ull, 15% polyamid | 150 | 100.000 | 936 |
| Co Lab Arkiv | 5% ull, 15% polyamid | 150 | 50.000 | 936 |
| Co Lab Blue | 5% ull, 15% polyamid | 150 | 50.000 | 936 |
| Co Lab Cinder | 5% ull, 15% polyamid | 150 | 80.000 | 936 |
| Co Lab Layer | 5% ull, 15% polyamid | 150 | 100.000 | 936 |
| Co Lab Magna | 5% ull, 15% polyamid | 150 | 50.000 | 936 |
| Co Lab Pole | 5% ull, 15% polyamid | 150 | 50.000 | 936 |
| Co Lab Serif | 5% ull, 15% polyamid | 150 | 50.000 | 936 |
| Co Lab Wave | 5% ull, 15% polyamid | 150 | 50.000 | 936 |
| Co Lab Wit | 5% ull, 15% polyamid | 150 | 100.000 | 936 |
| Easy | 5% ull, 15% polyamid | 140 | 150.000 | 600 |
| Flex | A. 97% ull, 2% polyamid, 1% lycra | 150 | 50.000 | 936 |
| Front 2 | A. 83% ull, 15% polyamid, 2% lycra | 150 | 100.000 | 936 |
| Happy | 100% Trevira CS | 150 | 50.000 | 778 |
| Harper | 100% Trevira CS | 150 | 85.000 | 900 |
| Heritage Blend | 90% ull, 10% polyamid | 150 | 45.000 | 748 |
| Heritage Botany | 89% ull, 11% polyamid | 150 | 130.000 | 764 |
| Heritage Dobby | 85% ull, 15% polyamid | 150 | 140.000 | 764 |
| Heritage Kipper | 92% ull, 8% polyamid | 150 | 60.000 | 764 |
| Heritage Medio | 89% ull, 11% polyamid | 150 | 100.000 | 764 |
| Heritage Pelo | 89% ull, 11% polyamid | 150 | 100.000 | 764 |
| Heritage Stitch | 5% ull, 15% polyamid | 150 | 130.000 | 764 |
| Heritage Tailor | 5% ull, 15% polyamid | 150 | 60.000 | 764 |



primetex.

25% rabatt ska dras av på angivna priser

svensson

| Tyg | Komposition | Bredd | Martindale | Pris /m |
|---------------|------------------------|-------|------------|---------|
| Heritage Tint | 5% ull, 15% polyamid | 150 | 140.000 | 764 |
| Heritage Tuck | 5% ull, 15% polyamid | 150 | 100.000 | 764 |
| Iconic | 100% Trevira CS | 150 | 50.000 | 786 |
| Ink | 5% ull, 15% polyamid | 150 | 60.000 | 917 |
| Intro | 100% Trevira CS | 150 | 50.000 | 891 |
| Juno | 100% Trevira CS | 150 | 50.000 | 936 |
| Khaki | 100% Trevira CS | 140 | 50.000 | 617 |
| Link | 100% Trevira CS | 140 | 50.000 | 786 |
| Mingel | 100% Trevira CS | 150 | 50.000 | 879 |
| Moss | 5% ull, 15% polyamid | 150 | 120.000 | 1086 |
| Plain | 100% Trevira CS | 150 | 50.000 | 955 |
| Poppy | 100% Trevira CS | 150 | 50.000 | 899 |
| Rami Plus | 80% ull, 20% rami | 140 | 70.000 | 1060 |
| Revolt | 100% Trevira CS | 140 | 50.000 | 865 |
| Soft/Mill | 75% ull, 25% viskos | 150 | 50.000 | 912 |
| Step | 75% ull, 25% viskos | 150 | 50.000 | 730 |
| Tableau | 1.98% ull, 2% polyamid | 140 | 50.000 | 899 |
| Urban | 100% Trevira CS | 140 | 80.000 | 727 |
| Velvet Kit | 100% Trevira CS | 150 | 35.000 | 899 |
| Velvet Mira | 100% Trevira CS | 150 | 40.000 | 899 |
| Velvet Pocket | 100% Trevira CS | 150 | 40.000 | 899 |
| Velvet Unit | 100% Trevira CS | 150 | 50.000 | 899 |
| Vy | 85% ull, 15% polyamid | 150 | 100.000 | 899 |

VESCOM

| Artikel | Komposition: | bredd | Pris /m |
|-----------------|----------------------------|-------|---------|
| <i>Möbeltyg</i> | | | |
| Acton | 100% Pes CS | 140 | 630 |
| Ariana | 100% mohair | 140 | 1470 |
| Billiard Cloth | 100% Pet/backing/EasyClean | 137 | 1113 |
| Bowen | 92% wool/8% polyamide | 140 | 826 |
| Burton | 100% Polyester FR/TCs | 140 | 770 |
| Cres | 100% Trevira CS | 140 | 546 |
| Deans | 100% Trevira CS | 140 | 770 |
| Eliot | 100% Polyester FR/TCs | 137 | 735 |
| Fuga | 100% Trevira CS | 140 | 770 |
| Gamut | 100% Pet Easy Clean | 137 | 656 |
| Hestan | 100% Trevira CS | 140 | 728 |
| Lamu | 80% wool/20% polyamide | 140 | 826 |
| Lani | 80% wool/20% polyamide | 140 | 826 |
| Lindau | 80% wool/20% polyamide | 140 | 770 |
| Noss | 100% Polyester FR/TCs | 140 | 770 |



primetex.

25% rabatt ska dras av på angivna priser

VESCOOM

| Artikel | Komposition: | bredd | Pris /m |
|---------------------------|--------------------------------|-------|---------|
| Möbiltyg | | | |
| Ponza | 100% Trevira CS | 140 | 784 |
| Rocket | 100% Pet Easy Clean | 137 | 796 |
| Rolla | 100% Pes CS | 140 | 805 |
| Samar | 100% Trevira CS | 140 | 553 |
| Togo | 100% Mohair | 130 | 1673 |
| Wolin | 80% wool/20% polyamide | 140 | 826 |
| Zanzibar | 100% mohair | 140 | 1679 |
| Läder / konstläder | | | |
| <i>Spritbara</i> | | | |
| Arrow | inkl. vätskespär | 140 | 558 |
| Creek | inkl. vätskespär | 140 | 558 |
| Cyprus | inkl. vätskespär | 140 | 558 |
| Dalma | inkl. vätskespär | 140 | 558 |
| Furka Plus | inkl. vätskespär | 140 | 558 |
| Jemo | inkl. vätskespär | 140 | 558 |
| Leone Plus | inkl. vätskespär | 140 | 558 |
| Malta | inkl. vätskespär | 140 | 558 |
| Scott | inkl. vätskespär | 140 | 558 |
| Silica | inkl. vätskespär, klotterskydd | 137 | 805 |

VILLA NOVA ROMO GROUP

| Artikel | Komposiotion | Bredd | Pris /m |
|--------------------|---------------------------|-------|---------|
| Atil EasyClean | 100% Polyester | 140 | 620 |
| Atlantis EasyClean | 100% Polyester | 140 | 490 |
| Barcelona | 100% Polyester | 295 | 780 |
| Calvia EasyClean | 100% Polyester | 144 | 590 |
| Cambay EasyClean | 100% Polyester | 140 | 570 |
| Kotor EasyClean | 100% Polyester | 144 | 590 |
| Lucerne | 100% Polyester | 140 | 380 |
| Palma | 89% PL 11% CO | 140 | 610 |
| Pico FR | 100% Flamsäkrad polyester | 295 | 970 |



primetex.

VI SKAPAR DEN PERFEKTA ARBETSMILJÖN.