

18,5% påslag på angivna priser



STATLIGT RAMAVTAL FÖR TEXTIL INREDNING FÖR FÖNSTERMILJÖ

Avtal 23.3-8004-18:025



Gardintyger från Astrid

<https://astrid.se>

Version 1.0

# 18,5% påslag på angivna priser

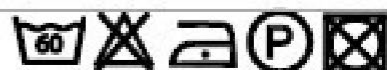
**ANJA NETTOPRIS: 232 SEK/M**



Anja is woven with thin, fine threads. It is a soft, light and transparent fabric that has a beautiful drape.

This fabric is suitable when fire safety, ease of care and color durability are priorities.

ARTICLE:	Anja
TYPE OF CLOTH:	Woven fabric
MAIN USE:	Curtain
NUMBER OF COLORS:	7
COMPOSITION:	100% Trevira CS
WIDTH:	300 cm
WEIGHT:	56 gr/m <sup>2</sup>
SHRINKAGE AFTER WASHING:	Warp 1,5% Weft 1%
DYEING:	Piece dyed
COLOUR FASTNESS TO ARTIFICIAL LIGHT:	6
COLOUR FASTNESS TO WASHING:	4-5
FLAME RETARDANT:	Yes
CARE:	

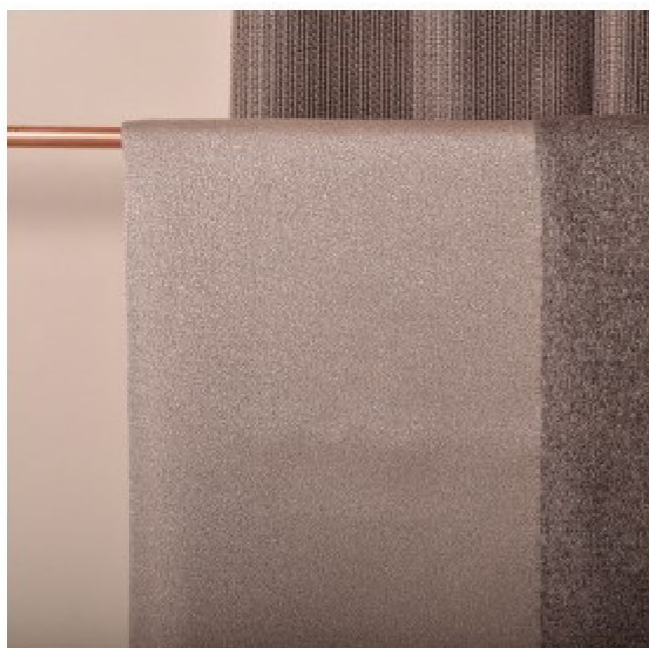


Wash in lower temperature if possible

**LÄNK TILL FÄRGER:** <http://astrid.se/product/anja/>

18,5% påslag på angivna priser

**BARBERA NETTOPRIS: 445 SEK/M**




## BARBERA

is a sturdy and dense fabric with a multicolored surface.

Barbera is matched in colours with Lustro and California.

This fabric is suitable when fire safety, ease of care and color durability are priorities. Colour may vary.

Please be aware that screen colours, printer colours and fabric dye batches may all vary.

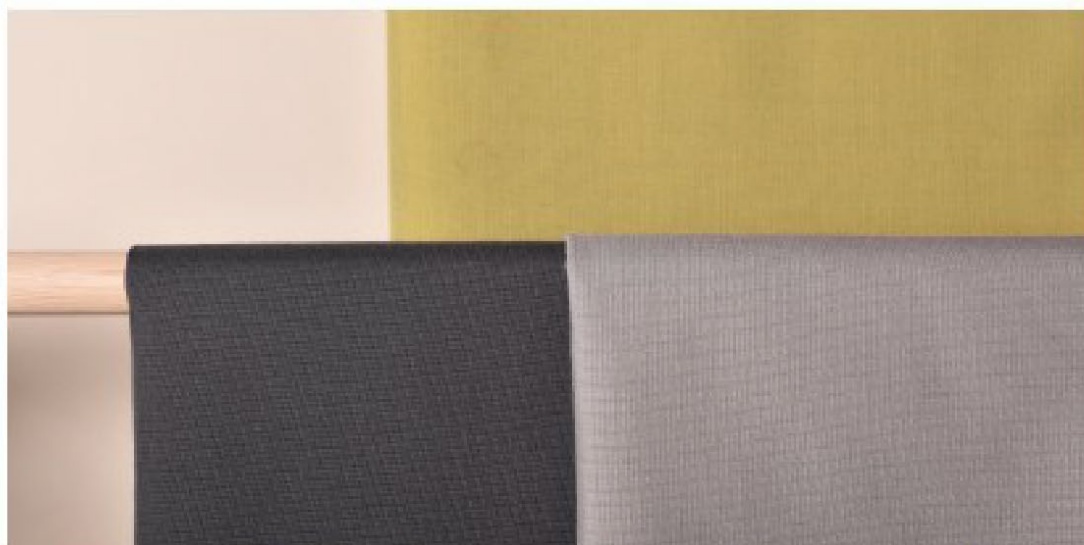
ARTICLE:	Barbera
BINDING:	Satin
DYEING:	Yarn dyed
MAIN USE:	Curtain
NUMBER OF COLOURS:	12
COMPOSITION:	61% Trevira CS 39% Polyester
WIDTH:	300 cm
WEIGHT:	173 gr/m <sup>2</sup>
SHRINKAGE AFTER WASHING:	Warp 1% Weft 1,5%
COLOUR FASTNESS TO ARTIFICIAL LIGHT:	6
COLOUR FASTNESS TO WASHING:	4-5
FLAME RETARDANT:	Yes EN 1102:1995
ENVIRONMENT:	Produced in Italy. Complies with REACH regulation.
CARE:	 Wash in lower temperature if possible

**LÄNK TILL FÄRGER:** <http://astrid.se/product/barbera/>



# 18,5% påslag på angivna priser

**BASEL NETTOPRIS: 530 SEK/M**



Basel is a somewhat heavier curtain fabric in the flameproof material Trevira CS. It offers good coverage but allows light to pass through. The fabric is woven with two tones in warp and filler, giving a vibrant feel. Basel has a matte and soft surface and an elegant fall.

This fabric is suitable when fire safety, ease of care and color durability are priorities.

ARTICLE:	Basel
TYPE OF CLOTH:	Woven fabric
MAIN USE:	Curtain
NUMBER OF COLORS:	26
COMPOSITION:	100% Trevira CS
WIDTH:	300 cm
WEIGHT:	210 gr/m <sup>2</sup>
SHRINKAGE AFTER WASHING:	0,5%
DYEING:	Yarn dyed
LIGHT FASTNESS:	6
COLOUR FASTNESS AFTER LAUNDERING:	4-5
FLAME-RETARDENT:	Yes
CARE:	 Wash in lower temperature if possible

**LÄNK TILL FÄRGER:** <http://astrid.se/product/basel/>

# 18,5% påslag på angivna priser

**BERN NETTOPRIS: 479 SEK/M**



Bern is a semi-transparent fabric in the flameproof material Trevira CS. It falls beautifully and has a slight shine. The warp and weft are in two different tones, giving the fabric a slightly shimmering surface.

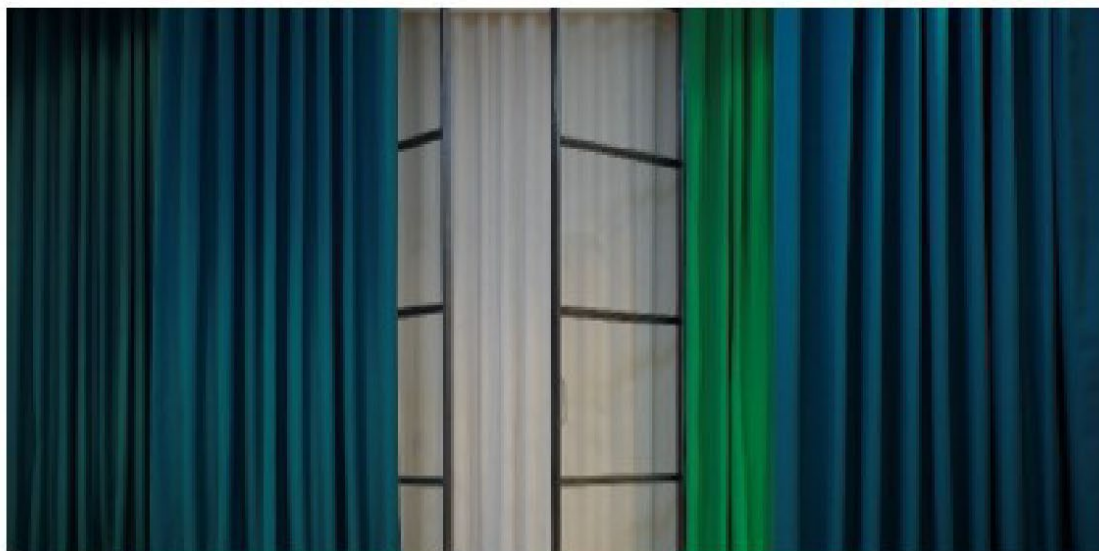
This fabric is suitable when fire safety, ease of care and color durability are priorities. Color may vary.

	Bern
ARTICLE:	Woven fabric
TYPE OF CLOTH:	Curtain
MAIN USE:	40
NUMBER OF COLORS:	100% Trevira CS
COMPOSITION:	300 cm
WIDTH:	165 gr/m <sup>2</sup>
WEIGHT:	1%
SHRINKAGE AFTER WASHING:	Yarn dyed
DYEING:	6
COLOUR FASTNESS TO ARTIFICIAL LIGHT:	4-5
COLOUR FASTNESS TO WASHING:	Yes
FLAME RETARDANT:	    
CARE:	Wash in lower temperature if possible

**LÄNK TILL FÄRGER:** <http://astrid.se/product/bern/>

18,5% påslag på angivna priser

**BOTTERO NETTOPRIS: 438 SEK/M**



Bottero is one of our heavier flameproof curtain fabrics, with a shimmering, almost high tech finish. Shades well and falls beautifully.

This fabric is suitable when fire safety, ease of care and color durability are priorities.

ARTICLE:	Bottero
TYPE OF CLOTH:	Woven fabric
MAIN USE:	Curtain, Decoration
NUMBER OF COLORS:	72
COMPOSITION:	51% Trevira CS 49% Polyester
WIDTH:	300 cm
WEIGHT:	277 gr/m <sup>2</sup>
SHRINKAGE AFTER WASHING:	1%
DYEING:	Piece dyed
COLOUR FASTNESS TO ARTIFICIAL LIGHT:	6
COLOUR FASTNESS TO WASHING:	4-5
FLAME RETARDANT:	Yes

CARE:



Wash in lower temperature if possible

**LÄNK TILL FÄRGER:** <http://astrid.se/product/bottero/>




18,5% påslag på angivna priser

**CALIFORNIA NETTOPRIS: 449 SEK/M**



California is woven with thin, fine threads, often with different colors on the warp and weft, making the colors shift somewhat. It is a soft, light and semi-transparent fabric that has a beautiful drape.

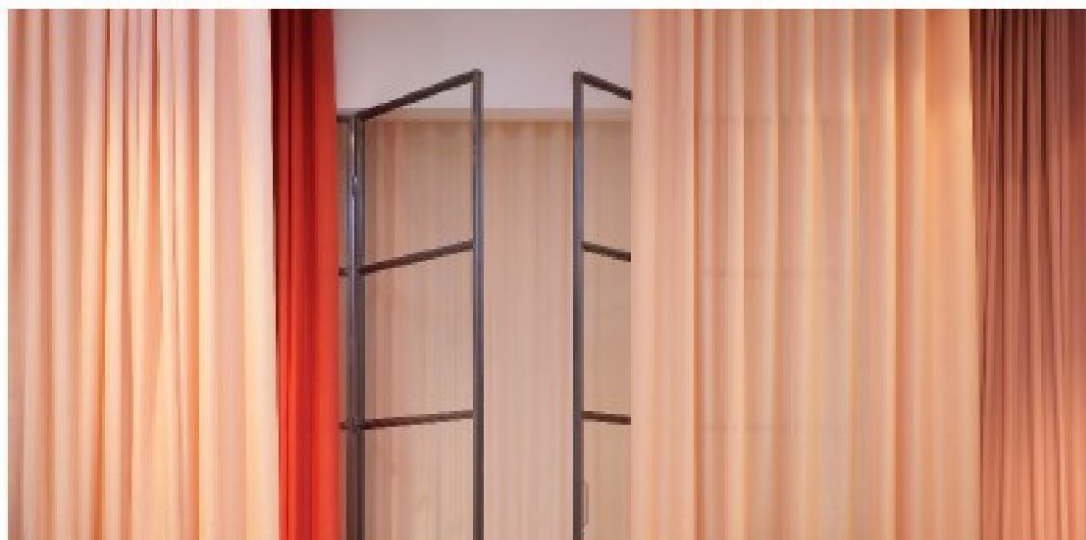
This fabric is suitable when fire safety, ease of care and color durability are priorities.

ARTICLE:	California
TYPE OF CLOTH:	Woven fabric
MAIN USE:	Curtain
NUMBER OF COLORS:	25
COMPOSITION:	100% Trevira CS
WIDTH:	300 cm
WEIGHT:	70 gr/m <sup>2</sup>
SHRINKAGE AFTER WASHING:	Warp 1% Weft 1,5%
DYEING:	Yarn dyed
COLOUR FASTNESS TO ARTIFICIAL LIGHT:	6
COLOUR FASTNESS TO WASHING:	4-5
FLAME RETARDANT:	Yes
CARE:	 Wash in lower temperature if possible

**LÄNK TILL FÄRGER:** <http://astrid.se/product/california/>

# 18,5% påslag på angivna priser

**COMO NETTOPRIS: 315 SEK/M**



Como is smooth and sleek, with a straight fall and a very stylish curtain fabric. The color range is broad and includes many spot-on successes.

This fabric is suitable when fire safety, ease of care and color durability are priorities. Color may vary.

ARTICLE:	Como
TYPE OF CLOTH:	Woven fabric
MAIN USE:	Curtain
NUMBER OF COLORS:	32
COMPOSITION:	100% Trevira CS
WIDTH:	340 cm
WEIGHT:	135 gr/m <sup>2</sup>
SHRINKAGE AFTER WASHING:	Warp 2% Weft 1,5%
DYEING:	Piece dyed
COLOUR FASTNESS TO ARTIFICIAL LIGHT:	6
COLOUR FASTNESS TO WASHING:	4-5
FLAME RETARDANT:	Yes
CARE:	 Wash in lower temperature if possible

**LÄNK TILL FÄRGER:** <http://astrid.se/product/como/>



# 18,5% påslag på angivna priser

## DAVOS NETTOPRIS: 325 SEK/M



Davos is a curtain fabric made of Trevira CS. It is loosely woven and has a linen-like finish. The fabric is soft and supple and gives an airy impression. The color range is broad and rich.

This fabric is suitable when fire safety, ease of care and color durability are priorities.

ARTICLE:	Davos
TYPE OF CLOTH:	Woven fabric
MAIN USE:	Curtain
NUMBER OF COLORS:	46
COMPOSITION:	100% Trevira CS
WIDTH:	300 cm
WEIGHT:	98 gr/m <sup>2</sup>
SHRINKAGE AFTER WASHING:	Warp 1,5% Weft 1%,
DYEING:	Piece dyed
COLOUR FASTNESS TO ARTIFICIAL LIGHT:	6
COLOUR FASTNESS TO WASHING:	4-5
FLAME RETARDANT:	Yes
CARE:	 Wash in lower temperature if possible

LÄNK TILL FÄRGER: <http://astrid.se/product/davos/>

# 18,5% påslag på angivna priser

## ISOLDE NETTOPRIS: 290 SEK/M



### ISOLDE

A transparent Trevira voile with a shimmering surface.

Please be aware that screen colours, printer colours and fabric dye batches may all vary.

ARTICLE:	Isolde
BINDING:	Dobby
DYEING:	Piece dyed
MAIN USE:	Curtain
COMPOSITION:	100% Trevira CS
WIDTH:	300 cm
WEIGHT:	54 gr/m <sup>2</sup>
SHRINKAGE AFTER WASHING:	1%
COLOUR FASTNESS TO ARTIFICIAL LIGHT:	5
COLOUR FASTNESS TO WASHING:	4-5
FLAME RETARDANT:	Yes
ENVIRONMENT:	Produced in Switzerland. Complies with REACH regulation and Öko tex.
CARE:	

LÄNK TILL FÄRGER: <http://astrid.se/product/isolde/>

# 18,5% påslag på angivna priser

**LUGANO NETTOPRIS: 260 SEK/M**



Lugano is a thin, fine and transparent voile in Trevira CS. It has a matte and smooth finish and falls beautifully. Available in many lovely colors.

This fabric is suitable when fire safety, ease of care and color durability are priorities.

ARTICLE:	Lugano
TYPE OF CLOTH:	Woven fabric
MAIN USE:	Curtain
NUMBER OF COLORS:	40
COMPOSITION:	100% Trevira CS
WIDTH:	300 cm
WEIGHT:	78 gr/m <sup>2</sup>
REPEAT:	Plain fabric
SHRINKAGE AFTER WASHING:	1%
DYEING:	Piece dyed
COLOUR FASTNESS TO ARTIFICIAL LIGHT:	6
COLOR FASTNESS TO WASHING:	4-5
FLAME RETARDANT:	Yes
CARE:	 Wash in lower temperature if possible

**LÄNK TILL FÄRGER:** <http://astrid.se/product/lugano/>



# 18,5% påslag på angivna priser

## NIZZA MANO MORBIDA NETTOPRIS: 273 SEK/M



Nizza is a double width Trevira CS curtain quality. The color range is a mix of natural and tones with a matte and wooly surface.

This fabric is suitable when fire safety, ease of care and color durability are priorities.

ARTICLE:	Nizza Mano Morbida
TYPE OF CLOTH:	Woven fabric
MAIN USE:	Curtain
NUMBER OF COLORS:	8
COMPOSITION:	100% Trevira CS
WIDTH:	325-330 cm
WEIGHT:	103 gr/m <sup>2</sup>
SHRINKAGE AFTER WASHING:	Warp 2% Weft 1%
DYEING:	Piece dyed
CLOUR FASTNESS TO ARTIFICIAL LIGHT:	6
COLOUR FASTNESS TO WASHING:	4-5
FLAME RETARDANT:	Yes
CARE:	 Wash in lower temperature if possible


LÄNK TILL FÄRGER: <http://astrid.se/product/nizza-mano-morbida/>

18,5% påslag på angivna priser

**PRATO NETTOPRIS: 316 SEK/M**



This fabric is suitable when fire safety, ease of care and color durability are priorities. Color may vary.

ARTICLE:	Prato
TYPE OF CLOTH:	Woven fabric
MAIN USE:	Curtain
NUMBER OF COLORS:	51
COMPOSITION:	57% Pol FR 43% Pol
WIDTH:	325 cm
WEIGHT:	125 gr/m <sup>2</sup>
REPEAT:	Plain fabric
SHRINKAGE AFTER WASHING:	Warp 1,5% Weft 1%
DYEING:	Piece dyed
LIGHT FASTNESS:	6
COLOR FASTNESS:	4-5
FLAME-RETARDENT:	Yes
CARE:	 Wash in lower temperature if possible

**LÄNK TILL FÄRGER:** <http://astrid.se/product/prato/>

# 18,5% påslag på angivna priser

**RIVOLI NETTOPRIS: 464 SEK/M**



Rivoli has a natural touch, much due to its multicolored threads. It has great draping skills and a soft and beautiful lustre.

This fabric is suitable when fire safety, ease of care and color durability are priorities. Color may vary.

ARTICLE:	Rivoli
TYPE OF CLOTH:	Woven fabric
MAIN USE:	Curtain
NUMBER OF COLORS:	16
COMPOSITION:	100% Trevira CS
WIDTH:	330 cm
WEIGHT:	127 gr/m <sup>2</sup>
SHRINKAGE AFTER WASHING:	Warp 1,5% Weft 1%
DYEING:	Yarn dyed
COLOUR FASTNESS TO ARTIFICIAL LIGHT:	6
COLOUR FASTNESS TO WASHING:	4-5
FLAME RETARDANT:	Yes
CARE:	 Wash in lower temperature if possible

**LÄNK TILL FÄRGER:** <http://astrid.se/product/rivoli/>



18,5% påslag på angivna priser

**TRENTINA NETTOPRIS: 226 SEK/M**



This fabric is suitable when fire safety, ease of care and color durability are priorities. Color may vary.

ARTICLE:	Trentina
TYPE OF CLOTH:	Woven fabric
MAIN USE:	Curtain
NUMBER OF COLORS:	8
COMPOSITION:	51% Polyester FR 49% Pol.
WIDTH:	330 cm
WEIGHT:	135 gr/m <sup>2</sup>
REPEAT:	Plain fabric
SHRINKAGE AFTER WASHING:	Warp 1% Weft 2%
DYEING:	Piece dyed
COLOUR FASTNESS TO ARTIFICIAL LIGHT:	5
COLOUR FASTNESS TO WASHING:	4-5
FLAME RETARDANT:	Yes
CARE:	 Wash in lower temperature if possible


LÄNK TILL FÄRGER: <http://astrid.se/product/trentina/>

18,5% påslag på angivna priser

**NOTTE DIMOUT NETTOPRIS: 460 SEK/M**



This fabric is suitable when fire safety, ease of care and color durability are priorities. Color may vary.

ARTICLE:	Notte Dimout
TYPE OF CLOTH:	Woven fabric
MAIN USE:	Curtain
NUMBER OF COLORS:	28
COMPOSITION:	100% Polyester FR
WIDTH:	300 cm
WEIGHT:	300 gr/m <sup>2</sup>
REPEAT:	Plain fabric
SHRINKAGE AFTER WASHING:	0,4%
DYEING:	Piece dyed
LIGHT FASTNESS:	4-5
COLOUR FASTNESS	4-5
FLAME-RETARDENT:	Yes
CARE:	

LÄNK TILL FÄRGER: <http://astrid.se/product/notte/>